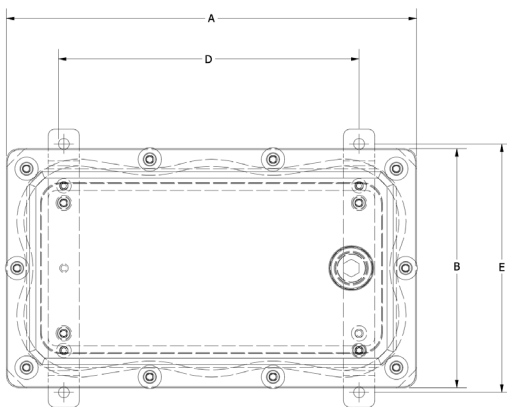


INDUSTRY STANDARDS

NEMA Type 6, 6P
IP67/68 IEC 60529
IK10 Impact Resistant

APPLICATION

The SUBSEA range of Aluminum Submersible Enclosures are the leaders in underwater system protection. Used by renewable energy, Submarine and ROV companies requiring ultimate protection against extreme marine conditions. Manufactured from marine grade Aluminum with corrosion resistant Stainless Steel type 316 hardware and a single piece Silicon O-ring that provides watertight protection of your vital electrical equipment whilst still allowing acoustic and wireless signal transmission. SLAYSON's SUBSEA range of enclosures and accessories deliver a reliable enclosure system to meet both the operational and environmental demands for any underwater application.



MODIFICATION AND CUSTOMIZATION

SLAYSON excels at modifying and personalizing all our Enclosure products to meet your exact specifications. Whether you require cutouts, welded in-place bosses or a non-standard size. Contact our experienced Engineers about your project specific solution.

MATERIAL

Marine Grade 5083 Aluminum*

FINISH

Natural Finish*

SPECIFICATIONS

- Submersible up to 656 ft / 200 mtr (IEC 60529)
- Corrosion Resistant Salt Spray Tested (ASTM B117)
- Heavy Duty Stainless Steel Type 316 mount feet
- Single piece Silicon Sealing O-Ring
- Stainless Steel 316 Fasteners & Hardware
- Internal fastening locations for optional Back Plate accessory
- High Impact & Crush Resistance (IK10)

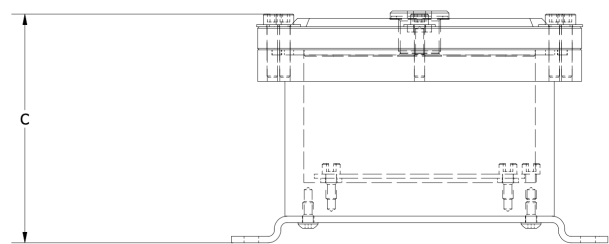
ACCESSORIES

- Internal Mount Plate
- Hinged Lid / Door
- Optical Window Lid / Door
- Security Lock Tab
- Captive Lid Fasteners
- Internal Swing Out Panel
- Shock & Vibration Isolation Mount Kits
- 360° EMC / EMP Shielding Gasket
- External Grounding Stud
- Fluorosilicone Gasket
- Heavy Duty Lifting Eye Hooks
- Heavy Duty Gusset mount tabs
- Pull Handle
- Document Pocket
- Welded In-Place Hubs
- Cable Glands / Cord grips
- Integrated Thermal Heatsink
- CARC Paint System (MIL-DTL-64159)

CODE

B
H
O
P
C
S
V
E
G
F
L
T
U
M
*
*
*
*

*Customer Modification Code is required when the Accessory component selected requires any of the following: enclosure cutouts, through holes or penetrations, customer involved design for accessory placement. This code is added in front of the part number by SLAYSON to provide a unique identifier for the customer specific engineering data.



PART NUMBER BUILDER

Customer Mod Code*	Material		Imperial	A Height (in)		B Width (in)		C Depth (in)		Accessory Codes		
<div></div> <div></div>	<div>B</div> <div>B</div>		<div>B</div>	<div>I</div>	<div>0</div> <div>7</div>	<div>1</div> <div>1</div>	<div>0</div> <div>4</div>	<div></div>	<div></div>	<div></div>	<div></div>	
	Enclosure Series		Submersion Depth		For Non-Standard sizes or to add Optional Accessories use the Part Number Builder to configure the part number.							

*Generated by SLAYSON Engineering for customer specific modifications

PART NUMBER	A		B		C		D		E		F	
	External Height		External Width		External Depth		Internal Height		Internal Width		Internal Depth	
	in	mm	in	mm	in	mm	in	mm	in	mm	in	mm
BBBI071104	07	170.0	11.4	290.0	4.4	227.0	14.3	364.0	7.3	185.0	3.6	92.0