

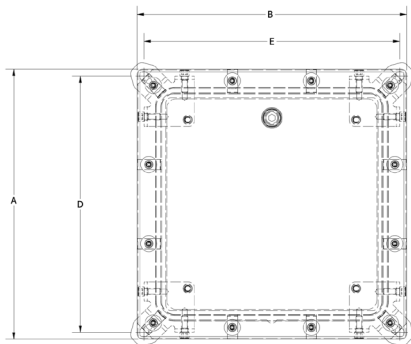


## INDUSTRY STANDARDS

NEMA Type 6, 6P  
IP67/68 IEC 60529  
IK10 Impact Resistant

## APPLICATION

The SUBSEA range of Deep Submersible Enclosures are the leaders in underwater system protection. Used by renewable energy, Submarine and ROV companies requiring ultimate protection against extreme marine conditions. Manufactured from Rigid Polyurethane Composite with corrosion resistant Stainless Steel type 316 hardware and a single piece Silicon O-ring that provides watertight protection of your vital electrical equipment whilst still allowing acoustic and wireless signal transmission. SLAYSON's SUBSEA range of enclosures and accessories deliver a reliable enclosure system to meet both the operational and environmental demands for any underwater application.



## MODIFICATION AND CUSTOMIZATION

SLAYSON excels at modifying and personalizing all our Enclosure products to meet your exact specifications. Whether you require cutouts, welded in-place bosses or a non-standard size. Contact our experienced Engineers about your project specific solution.

## MATERIAL

Rigid Polyurethane Composite (Yellow)\*

## FINISH

Gloss Mold Finish\*

\*Alternative color options available on request

## SPECIFICATIONS

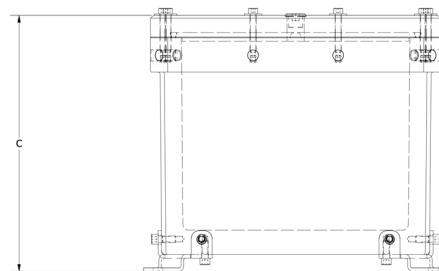
- Submersible up to 98 ft / 30 m (IEC 60529)
- Corrosion Resistant Salt Spray Tested (ASTM B117)
- Seamless Single Mould Construction
- Single piece Silicon Sealing O-Ring
- Stainless Steel 316 Hardware & Fasteners
- Single piece Silicon Sealing O-Ring
- Stainless Steel 316 Hardware & Fasteners
- Internal fastening locations for optional Back Plate accessory
- High Impact & Crush Resistance (IK10)

## ACCESSORIES

## CODE

- |  |   |
|--|---|
| Internal Mount Plate                   | B |
| Optical Window Lid / Door              | O |
| Captive Lid Fasteners                  | C |
| Internal Swing Out Panel               | S |
| Shock & Vibration Isolation Mount Kits | V |
| 360° EMC / EMP Shielding Gasket        | E |
| Fluorosilicone Gasket                  | F |
| Heavy Duty Lifting Eye Hooks           | L |
| Heavy Duty Gusset mount tabs           | T |
| Pull Handle                            | U |
| Document Pocket                        | M |
| Cable Glands / Cord grips              | * |
| Integrated Thermal Heatsink            | * |
| CARC Paint System (MIL-DTL-64159)      | * |

\*Customer Modification Code is required when the Accessory component selected requires any of the following: enclosure cutouts, through holes or penetrations, customer involved design for accessory placement. This code is added in front of the part number by SLAYSON to provide a unique identifier for the customer specific engineering data.



## PART NUMBER BUILDER

Customer Mod Code*	Material				Imperial	A Height (in)	B Width (in)	C Depth (in)	Accessory Codes						
<div></div>	<div></div>	—	D	P	Q	I	1	9	2	0	2	0			
			Enclosure Series	Submersion Depth			For Non-Standard sizes or to add Optional Accessories use the Part Number Builder to configure the part number.								

\*Generated by SLAYSON Engineering for customer specific modifications

PART NUMBER	A		B		C		D		E		F	
	External Height		External Width		External Depth		Internal Height		Internal Width		Internal Depth	
	in	mm	in	mm	in	mm	in	mm	in	mm	in	mm
DPQI192020	19	482.6	20	508.0	20	508.0	14	355.6	14	355.6	14	355.6
DPQI171818	17	431.8	18	457.2	18	457.2	12	304.8	12	304.8	12	304.8
DPQI141616	14.5	367.0	16.4	406.5	16.4	416.0	10.6	270.0	10.6	270.0	10.6	270.0
DPQI121414	12	304.8	14	355.6	14	355.6	8	203.2	8	203.2	8	203.2
DPQI101212	10	254.0	12	304.8	12	304.8	6	152.4	6	152.4	6	152.4