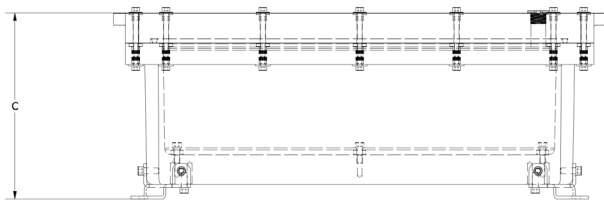


**INDUSTRY STANDARDS**

NEMA Type 6, 6P  
IP67/68 IEC 60529  
IK10 Impact Resistant

**APPLICATION**

The SUBSEA range of Deep Submersible Enclosures are the leaders in underwater system protection. Used by renewable energy, Submarine and ROV companies requiring ultimate protection against extreme marine conditions. Manufactured from Rigid Polyurethane Composite with corrosion resistant Stainless Steel type 316 hardware and a single piece Silicon O-ring that provides watertight protection of your vital electrical equipment whilst still allowing acoustic and wireless signal transmission. SLAYSON's SUBSEA range of enclosures and accessories deliver a reliable enclosure system to meet both the operational and environmental demands for any underwater application.



**SPECIFICATIONS**

- Submersible up to 262 ft / 80 m (IEC 60529)
- Corrosion Resistant Salt Spray Tested (ASTM B117)
- Seamless Single Mould Construction
- Single piece Silicon Sealing O-Ring
- Stainless Steel 316 Hardware & Fasteners
- Single piece Silicon Sealing O-Ring
- Stainless Steel 316 Hardware & Fasteners
- Internal fastening locations for optional Back Plate accessory
- High Impact & Crush Resistance (IK10)

**MATERIAL**

Rigid Polyurethane Composite (Yellow)\*

**FINISH**

Gloss Mold Finish\*

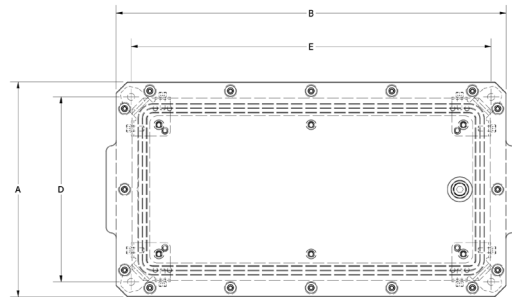
\*Alternative color options available on request

**OPTIONAL ACCESSORIES**

- Standard Internal Mount/Back Plates
- Hinged Lid
- Optical Window Lid
- Lock Tab
- Captive Lid Fasteners
- Internal Swing out Panel
- Stainless Steel Type 316 Cable Glands / Cord grips
- Shock & Vibration Isolation Mount Kit

**CODE**

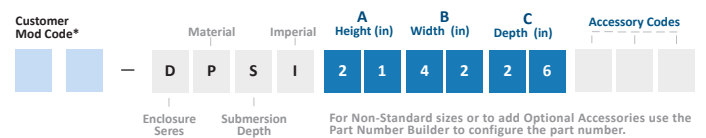
B  
H  
O  
L  
C  
S



**MODIFICATION AND CUSTOMIZATION**

SLAYSON excels at modifying and personalizing all our Enclosure products to meet your exact specifications. Whether you require cutouts, welded in-place bosses or a non-standard size. Contact our experienced Engineers about your project specific solution.

**PART NUMBER BUILDER**



\*Generated by SLAYSON Engineering for customer specific modifications

PART NUMBER	A		B		C		D		E		F	
	External Height		External Width		External Depth		Internal Height		Internal Width		Internal Depth	
	in	mm	in	mm	in	mm	in	mm	in	mm	in	mm
DPSI214226	21	533.4	42	1066.8	26	660.4	16	406.4	36	914.4	21	533.4
DPSI194024	19	482.6	40	1016.0	24	609.6	14	355.6	34	863.6	19	482.6
DPSI163620	15	381.0	36	914.0	20	508.0	10	254.0	30	762.0	15	381.0
DPSI072613	11	282.5	32	814.0	16.7	425.0	6.5	166.0	25.4	644.0	11.6	296.0
DPSI093014	9	228.6	30	762.0	14	355.6	4	101.6	22	558.8	9	228.6