



SPECIFICATIONS

- NEMA 6P and IP68
- Submersible up to 15 ft / 5 mtr (IEC 60529)
- Corrosion Resistant Salt Spray Test (ASTM B117)
- Seams continuously welded and ground smooth
- Heavy Duty removable door Hinges
- Single piece Neoprene Gasket
- Dual Gasket Beryllium Copper
- 360° Shielding EMC / EMP (MIL-STD-285)
- Internal Threaded Collar Stud locations for Internal Mount Plate [B]
- High Impact & Crush Resistance (IK10)
- Designed to withstand Shock & Vibration (MIL-STD-810)

MATERIAL

Aluminum 0.080" | 2.00mm*

CODE

A

FINISH

- Desert Sand AMS-STD-595 color 33446, RAL 1015* D
- Olive Drab AMS-STD-595 color 24097, RAL6022* O
- Exterior Paint Finish over Chromate Conversion Coating pre-treatment all surfaces
- *Alternative finish & material options available

ACCESSORIES

Internal Mount Plate	B
Hinged Lid / Door	H
Optical Window Lid / Door	O
Security Lock Tab	P
Nameplate	N
Captive Lid Fasteners	C
Internal Swing Out Panel	S
Shock & Vibration Mount Kit	V
External Grounding Stud	G
Lifting Eye Hooks	L
Heavy Duty Gusset mount tabs	T
Access Door (IP66)	A
Pull Handle	U
Document Pocket	M
Welded In-Place Hubs	*
Welded In-Place Studs	*
Cable Glands / Cord grips	*
NPT Cable Glands	*
Integrated Thermal Heatsink	*
CARC Paint System	*

*Customer Modification Code is required when the Accessory component selected requires any of the following: enclosure cutouts, through holes or penetrations, customer involved design for accessory placement. This code is added in front of the part number by SLAYSON® to provide a unique identifier for customer specific engineering data.

INDUSTRY STANDARDS

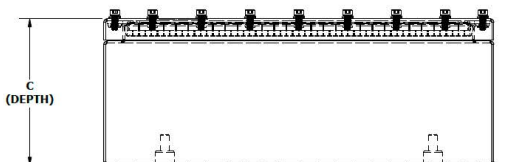
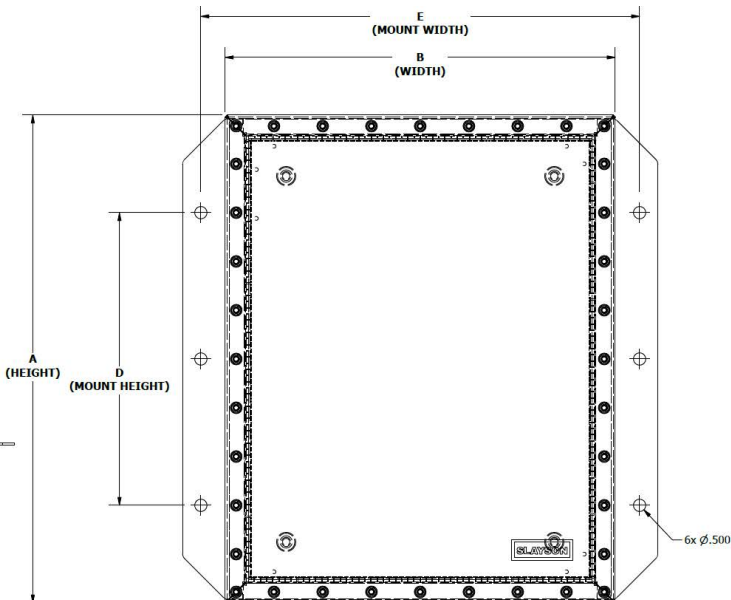
- NEMA Type 6, 6P
- IP67/68 IEC 60529
- IK10 Impact Resistant
- MIL- STD- 810, MIL-STD-285

APPLICATION

The MIL-68 SUBMERSIBLE ENCLOSURE offers reliable protection for military systems, vehicles and electronic hardware deployed in the harshest environments. This Enclosure has hermetic sealing preventing any ingress of dust and water, with dual Beryllium Copper gasket to insure complete 360° EMC/EMP immunity. The MIL-68 offers a COTS range of enclosures and accessories delivering a proven flexible enclosure system to military specification.

MODIFICATION AND CUSTOMIZATION

SLAYSON® excels at modifying and customizing all our products to meet your exact specifications. Whether you require, connector through hole cutouts, welded in-place accessories, or a non- standard size. Contact our experienced Engineers about your project specific solution.



PART NUMBER BUILDER

Customer Mod Code* - N A D I 2 6 2 6 1 6

Material: N (Enclosure Series), A (Finish), D (Imperial)

Height (cm): 26, Width (cm): 26, Depth (cm): 16

Accessory Codes: (empty)

For Non-Standard sizes or to add Optional Accessories use the Part Number Builder to configure the part number.

PART NUMBER	A		B		C		D		E		INTERNAL MOUNT PLATE				Gauge
	Height		Width		Depth		Mount Height		Mount Width		Height		Width		
	in	mm	in	mm	in	mm	in	mm	in	mm	in	mm	in	mm	
NADI262616	26	660.4	26	660.4	16	406.4	22	558.8	28	711.2	24	609.6	24	609.6	0.080"
NADI262614	26	660.4	26	660.4	14	355.6	22	558.8	28	711.2	24	609.6	24	609.6	0.080"
NADI262214	26	660.4	22	558.8	14	355.6	22	558.8	24	609.6	24	609.6	20	508.0	0.080"
NADI262012	26	660.4	20	508.0	12	304.8	22	558.8	22	558.8	24	609.6	18	457.2	0.080"
NADI261410	26	660.4	14	355.6	10	254.0	22	558.8	16	406.4	24	609.6	12	304.8	0.080"
NADI242416	24	609.6	24	609.6	16	406.4	20	508.0	26	660.4	22	558.8	22	558.8	0.080"
NADI242424	24	609.6	24	609.6	14	355.6	20	508.0	26	660.4	22	558.8	22	558.8	0.080"
NADI242014	24	609.6	20	508.0	14	355.6	20	508.0	22	558.8	22	558.8	18	457.2	0.080"
NADI241812	24	609.6	18	457.2	12	304.8	20	508.0	20	508.0	22	558.8	16	406.4	0.080"
NAD241210	24	609.6	12	304.8	10	254.0	20	508.0	14	355.6	22	558.8	10	254.0	0.080"
NADI222214	22	558.8	22	558.8	14	355.6	18	457.2	24	609.6	20	508.0	20	508.0	0.080"
NADI222212	22	558.8	22	558.8	12	304.8	18	457.2	24	609.6	20	508.0	20	508.0	0.080"
NADI221812	22	558.8	18	457.2	12	304.8	18	457.2	20	508.0	20	508.0	16	406.4	0.080"
NADI221410	22	558.8	14	355.6	10	254.0	18	457.2	16	406.4	20	508.0	12	304.8	0.080"
NADI221008	22	558.8	10	254.0	08	203.2	18	457.2	12	304.8	20	508.0	8	203.2	0.080"
NADI202014	20	508.0	20	508.0	14	355.6	16	406.4	22	558.8	18	457.2	18	457.2	0.080"
NADI202012	20	508.0	20	508.0	12	304.8	16	406.4	22	558.8	18	457.2	18	457.2	0.080"
NADI201612	20	508.0	16	406.4	12	304.8	16	406.4	18	457.2	18	457.2	14	355.6	0.080"
NADI201210	20	508.0	12	304.8	10	254.0	16	406.4	14	355.6	18	457.2	10	254.0	0.080"
NADI201208	20	508.0	12	304.8	08	203.2	16	406.4	14	355.6	18	457.2	10	254.0	0.080"
NADI181814	18	457.2	18	457.2	14	355.6	14	355.6	20	508.0	16	406.4	16	406.4	0.080"
NAD181812	18	457.2	18	457.2	12	304.8	14	355.6	20	508.0	16	406.4	16	406.4	0.080"
NADI181612	18	457.2	16	406.4	12	304.8	14	355.6	18	457.2	16	406.4	14	355.6	0.080"
NADI181410	18	457.2	14	355.6	10	254.0	14	355.6	16	406.4	16	406.4	12	304.8	0.080"
NADI181208	18	457.2	12	304.8	08	203.2	14	355.6	14	355.6	16	406.4	08	203.2	0.080"
NADI161612	16	406.4	16	406.4	12	304.8	12	304.8	18	457.2	14	355.6	14	355.6	0.080"
NADI161610	16	406.4	16	406.4	10	254.0	12	304.8	18	457.2	14	355.6	14	355.6	0.080"
NADI161410	16	406.4	14	355.6	10	254.0	12	304.8	16	406.4	14	355.6	12	304.8	0.080"
NADI161208	16	406.4	12	304.8	08	203.2	12	304.8	14	355.6	14	355.6	08	203.2	0.080"
NADI141412	14	355.6	14	355.6	12	304.8	10	254.0	16	406.4	12	304.8	06	152.4	0.080"
NADI141410	14	355.6	14	355.6	10	254.0	10	254.0	16	406.4	12	304.8	12	304.8	0.080"
NADI141210	14	355.6	12	304.8	10	254.0	10	254.0	14	355.6	12	304.8	10	254.0	0.080"
NADI141008	14	355.6	10	254.0	08	203.2	10	254.0	12	304.8	12	304.8	08	203.2	0.080"
NADI121210	12	304.8	12	304.8	10	254.0	08	203.2	14	355.6	10	254.0	06	152.4	0.080"
NADI121208	12	304.8	12	304.8	08	203.2	08	203.2	14	355.6	10	254.0	04	101.6	0.080"
NADI121008	12	304.8	10	254.0	08	203.2	08	203.2	12	304.8	08	203.2	08	203.2	0.080"
NADI120806	12	304.8	08	203.2	06	152.4	08	203.2	10	254.0	08	203.2	08	203.2	0.080"
NADI101008	10	254.0	10	254.0	08	203.2	06	152.4	12	304.8	08	203.2	06	152.4	0.080"
NADI101006	10	254.0	10	254.0	06	152.4	06	152.4	12	304.8	08	203.2	05	127.0	0.080"
NADI100806	10	254.0	08	203.2	06	152.4	06	152.4	10	254.0	06	152.4	04	101.6	0.080"
NADI080806	08	203.2	08	203.2	06	152.4	04	101.6	10	254.0	06	152.4	04	101.6	0.080"
NADI080804	08	203.2	08	203.2	04	101.6	04	101.6	10	254.0	07	177.8	05	127.0	0.080"