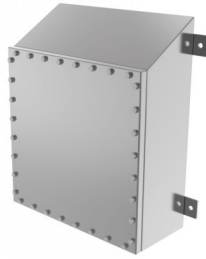
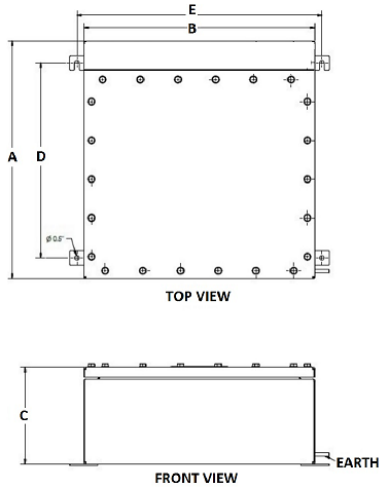




WATERSHED SUBMERSIBLE SERIES

NEMA 6P



SPECIFICATIONS

- Submersible up to 15 ft / 5 m
- Manufactured from 14g Type 316 Marine Grade Stainless Steel (available in Aluminum)
- Sloped proof prevents pooling of dust & water
- Single piece Neoprene gasket
- 316 Stainless Steel Hardware & Fasteners
- Mounting brackets on enclosure rear for mounting
- Grounding stud on enclosure body for earthing & grounding
- Weld studs for optional internal backing plates & terminal blocks
- High Impact & Crush Resistance

INDUSTRY STANDARDS

Meets NEMA Type 6P requirements
NEMA 4,4X,6P and IP68

APPLICATION

SLAYSON Submersible **Watershed Series** offers NEMA 6P / IP68 protection against water and dust ingress at depths up to 15ft / 5m. Submersible Standard Enclosures are manufactured as standard from 14g Marine Grade 316 Stainless Steel, ensuring protection in harsh and corrosive environments.

MODIFICATION AND CUSTOMIZATION

SLAYSON excels at modifying and customizing all our products to meet your exact specifications. Contact our experienced Engineers about your project specific solution.

ACCESSORIES

- Internal Mount/Back Plates
- External ground mounting stand
- Custom entry holes
- IP68 Stainless Steel cable glands / chord grips
- EMC / EMI / RFI Shielding (MIL-STD-285)
- Hinged Lid
- Hinged Internal Lid
- Welded in place Threaded Bosses
- Finish options available
- Shock & Vibration Protection (MIL-STD-810)
- Optical Viewing Window

PART NUMBER	A	B	C	D Mount	E Mount	BACK PLATE PART NUMBER	Height:	Width:	Gauge	Weight (lbs)
	Height: in (mm)	Width: in (mm)	Depth: in (mm)	Height: in (mm)	Width: in (mm)		in (mm)	in (mm)		
WSMI363624	36 (914.4)	36 (914.4)	24 (609.6)	38 (956.2)	34 (863.6)	ASPI3434	34 (863.6)	34 (863.6)	14	53
WSMI363612	36 (914.4)	36 (914.4)	12 (304.8)	38 (956.2)	34 (863.6)	ASPI3434	34 (863.6)	34 (863.6)	14	45
WSMI343424	34 (863.6)	34 (863.6)	24 (609.6)	36 (914.4)	32 (812.8)	ASPI3232	32 (812.8)	32 (812.8)	14	51
WSMI343412	34 (863.6)	34 (863.6)	12 (304.8)	36 (914.4)	32 (812.8)	ASPI3232	32 (812.8)	32 (812.8)	14	43
WSMI303018	30 (762)	30 (762)	18 (457.2)	32 (812.8)	28 (711.2)	ASPI2828	28 (711.2)	28 (711.2)	14	43
WSMI302618	30 (762)	26 (660.4)	18 (457.2)	32 (812.8)	28 (711.2)	ASPI2824	28 (711.2)	24 (609.6)	14	41
WSMI282816	28 (711.2)	28 (711.2)	16 (406.4)	30 (762)	26 (660.4)	ASPI2626	26 (660.4)	26 (660.4)	14	40
WSMI262616	26 (660.4)	26 (660.4)	16 (406.4)	28 (711.2)	24 (609.6)	ASPI2424	24 (609.6)	24 (609.6)	14	37
WSMI262614	26 (660.4)	26 (660.4)	14 (355.6)	28 (711.2)	24 (609.6)	ASPI2424	24 (609.6)	24 (609.6)	14	36
WSMI262214	26 (660.4)	22 (558.8)	14 (355.6)	28 (711.2)	20 (508)	ASPI2420	24 (609.6)	20 (508)	14	34
WSMI242412	24 (609.6)	24 (609.6)	12 (304.8)	26 (660.4)	22 (558.8)	ASPI2222	22 (558.8)	22 (558.8)	14	33
WSMI221212	22 (558.8)	12 (304.8)	12 (304.8)	24 (609.6)	14 (355.6)	ASPI2010	20 (508)	10 (254)	14	25