



MATERIAL

316L

FINISH

316L

316L

SPECIFICATIONS

- Submersible up to 30 ft / 10 mtr (IEC 60529)
- Corrosion Resistant Salt Spray Test (ASTM B117)
- Stainless Steel Type 316 Fasteners & Hardware
- Trough Collar Sealing Flange
- Seams continuously welded and ground smooth
- Single piece Neoprene Gasket
- Internal T Weld Nut fastening locations for optional Back Plate accessory
- High Impact & Crush Resistance (IK10)
- Internal Strengthening Rails for flexible Mounting Options

INDUSTRY STANDARDS

NEMA Type 6, 6P
 IP67/68 IEC 60529
 IK10 Impact Resistant

APPLICATION

The DEEP Standard SUBMERSIBLE Enclosure is the deep performer for utility, infrastructure and renewal energy companies. Rugged construction using Strengthening Rails that provide flexible Internal mounting options to give ultimate protection against extreme deep water submersion. Manufactured from corrosion resistant Stainless Steel Type 316 and a single piece Neoprene Gasket to provide watertight protection of your vital electrical equipment. SLAYSON's DEEP Standard SUBMERSIBLE range of enclosures and accessories can be wall or floor mounted to deliver a reliable enclosures system to meet all of industries environmental challenges.

MODIFICATION AND CUSTOMIZATION

SLAYSON excels at modifying and personalizing all our Enclosure products to meet your exact specifications. Whether you require connector cutouts, marker engraving or a non-standard size. Contact our experienced Engineers about your project specific solution.

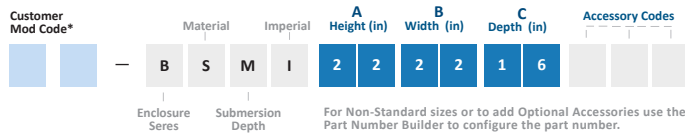
ACCESSORIES

- W
- H
- O
- P
- C
- S
- V
- E
- G
- F
- L
- R
- T
- D
- A
- U
- M
- *
- *
- *

CODE

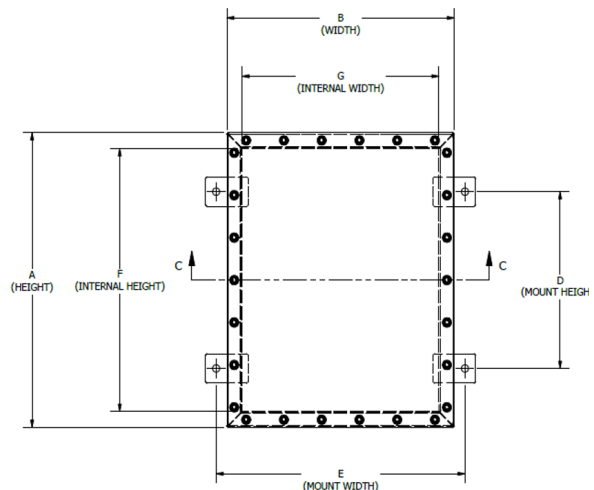
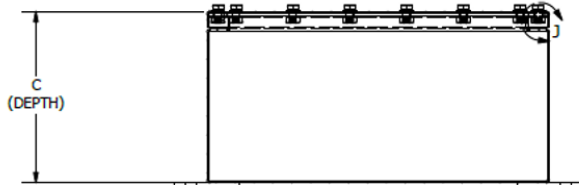
- B
- H
- O
- P
- C
- S
- V
- E
- G
- F
- L
- R
- T
- D
- A
- U
- M
- *
- *
- *

PART NUMBER BUILDER



*Generated by SLAYSON Engineering for customer specific modifications

*Customer Modification Code is required when the Accessory component selected requires any of the following: enclosure cutouts, through holes or penetrations, customer involved design for accessory placement. This code is added in front of the part number by SLAYSON to provide a unique identifier for the customer specific engineering data.



PART NUMBER	A		B		C		D		E		INTERNAL MOUNT PLATE				Gauge
	Height		Width		Depth		Mount Height		Mount Width		Height		Width		
	in	mm	in	mm	in	mm	in	mm	in	mm	in	mm	in	mm	
BSMI222216	22	558.8	22	558.8	16	406.4	18	457.2	24	609.6	18	457.2	18	457.2	14
BSMI222212	22	558.8	22	558.8	12	304.8	18	457.2	24	609.6	18	457.2	18	457.2	14
BSMI222210	22	558.8	22	558.8	10	254.0	18	457.2	24	609.6	18	457.2	18	457.2	14
BSMI222208	22	558.8	22	558.8	08	203.2	18	457.2	24	609.6	18	457.2	18	457.2	14
BSMI221612	22	558.8	16	406.4	12	304.8	18	457.2	18	457.2	18	457.2	12	304.8	14
BSMI221610	22	558.8	16	406.4	10	254.0	18	457.2	18	457.2	18	457.2	12	304.8	14
BSMI221608	22	558.8	16	406.4	08	203.2	18	457.2	18	457.2	18	457.2	12	304.8	14
BSMI221606	22	558.8	16	406.4	06	152.4	18	457.2	18	457.2	18	457.2	12	304.8	14
BSMI221210	22	558.8	12	304.8	10	254.0	18	457.2	14	355.6	18	457.2	08	203.2	14
BSMI221208	22	558.8	12	304.8	08	203.2	18	457.2	14	355.6	18	457.2	08	203.2	14
BSMI221206	22	558.8	12	304.8	06	152.4	18	457.2	14	355.6	18	457.2	08	203.2	14
BSMI202016	20	508.0	20	508.0	16	406.4	16	406.4	22	558.8	16	406.4	16	406.4	14
BSMI202012	20	508.0	20	508.0	12	304.8	16	406.4	22	558.8	16	406.4	16	406.4	14
BSMI202008	20	508.0	20	508.0	08	203.2	16	406.4	22	558.8	16	406.4	16	406.4	14
BSMI202006	20	508.0	20	508.0	06	152.4	16	406.4	22	558.8	16	406.4	16	406.4	14
BSMI201412	20	508.0	14	355.6	12	304.8	16	406.4	16	406.4	16	406.4	10	254.0	14
BSMI201410	20	508.0	14	355.6	10	254.0	16	406.4	16	406.4	16	406.4	10	254.0	14
BSMI201408	20	508.0	14	355.6	08	203.2	16	406.4	16	406.4	16	406.4	10	254.0	14
BSMI201406	20	508.0	14	355.6	06	152.4	16	406.4	16	406.4	16	406.4	10	254.0	14
BSMI201210	20	508.0	12	304.8	10	254.0	16	406.4	14	355.6	16	406.4	08	203.2	14
BSMI201208	20	508.0	12	304.8	08	203.2	16	406.4	14	355.6	16	406.4	08	203.2	14
BSMI201206	20	508.0	12	304.8	06	152.4	16	406.4	14	355.6	16	406.4	08	203.2	14
BSMI181814	18	457.2	18	457.2	14	355.6	14	355.6	20	508.0	14	355.6	14	355.6	14
BSMI181812	18	457.2	18	457.2	12	304.8	14	355.6	20	508.0	14	355.6	14	355.6	14
BSMI181808	18	457.2	18	457.2	08	203.2	14	355.6	20	508.0	14	355.6	14	355.6	14
BSMI181806	18	457.2	18	457.2	06	152.4	14	355.6	20	508.0	14	355.6	14	355.6	14
BSMI181412	18	457.2	14	355.6	12	304.8	14	355.6	16	406.4	14	355.6	10	254.0	14
BSMI181410	18	457.2	14	355.6	10	254.0	14	355.6	16	406.4	14	355.6	10	254.0	14
BSMI181408	18	457.2	14	355.6	08	203.2	14	355.6	16	406.4	14	355.6	10	254.0	14
BSMI181406	18	457.2	14	355.6	06	152.4	14	355.6	16	406.4	14	355.6	10	254.0	14
BSMI181210	18	457.2	12	304.8	10	254.0	14	355.6	14	355.6	14	355.6	08	203.2	14
BSMI181208	18	457.2	12	304.8	08	203.2	14	355.6	14	355.6	14	355.6	08	203.2	14
BSMI181206	18	457.2	12	304.8	06	152.4	14	355.6	14	355.6	14	355.6	08	203.2	14
BSMI161612	16	406.4	16	406.4	12	304.8	12	304.8	18	457.2	12	304.8	12	304.8	14
BSMI161610	16	406.4	16	406.4	10	254.0	12	304.8	18	457.2	12	304.8	12	304.8	14
BSMI161608	16	406.4	16	406.4	08	203.2	12	304.8	18	457.2	12	304.8	12	304.8	14
BSMI161606	16	406.4	16	406.4	06	152.4	12	304.8	18	457.2	12	304.8	12	304.8	14
BSMI161412	16	406.4	14	355.6	12	304.8	12	304.8	16	406.4	12	304.8	10	254.0	14
BSMI161410	16	406.4	14	355.6	10	254.0	12	304.8	16	406.4	12	304.8	10	254.0	14
BSMI161408	16	406.4	14	355.6	08	203.2	12	304.8	16	406.4	12	304.8	10	254.0	14
BSMI161406	16	406.4	14	355.6	06	152.4	12	304.8	16	406.4	12	304.8	10	254.0	14
BSMI161210	16	406.4	12	304.8	10	254.0	12	304.8	14	355.6	12	304.8	08	203.2	14
BSMI161208	16	406.4	12	304.8	08	203.2	12	304.8	14	355.6	12	304.8	08	203.2	14
BSMI161206	16	406.4	12	304.8	06	152.4	12	304.8	14	355.6	12	304.8	08	203.2	14
BSMI141412	14	355.6	14	355.6	12	304.8	10	254.0	16	406.4	10	254.0	10	254.0	14
BSMI141410	14	355.6	14	355.6	10	254.0	10	254.0	16	406.4	10	254.0	10	254.0	14
BSMI141408	14	355.6	14	355.6	08	203.2	10	254.0	16	406.4	10	254.0	10	254.0	14
BSMI141406	14	355.6	14	355.6	06	152.4	10	254.0	16	406.4	10	254.0	10	254.0	14
BSMI141210	14	355.6	12	304.8	10	254.0	10	254.0	14	355.6	10	254.0	08	203.2	14
BSMI141208	14	355.6	12	304.8	08	203.2	10	254.0	14	355.6	10	254.0	08	203.2	14
BSMI141206	14	355.6	12	304.8	06	152.4	10	254.0	14	355.6	10	254.0	08	203.2	14
BSMI121210	12	304.8	12	304.8	10	254.0	08	203.2	14	355.6	08	203.2	08	203.2	14
BSMI121208	12	304.8	12	304.8	08	203.2	08	203.2	14	355.6	08	203.2	08	203.2	14
BSMI121206	12	304.8	12	304.8	06	152.4	08	203.2	14	355.6	08	203.2	08	203.2	14
BSMI121008	12	304.8	10	254.0	08	203.2	08	203.2	12	304.8	08	203.2	06	152.4	14
BSMI121006	12	304.8	10	254.0	06	152.4	08	203.2	12	304.8	08	203.2	06	152.4	14