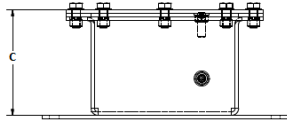
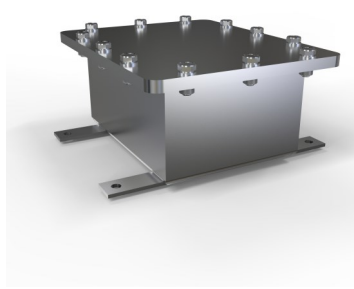
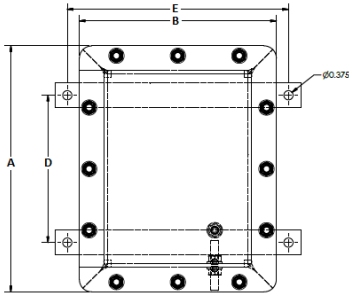




JUNCTION BOX SERIES

NEMA 6P



INDUSTRY STANDARDS

Meets NEMA Type 6P requirements

NEMA 4,4X,6P and IP68

APPLICATION

The SLAYSON Junction Box Series have been engineered for smaller applications. The flat lid enables SLAYSON to make these enclosures smaller while maintaining NEMA 6P / IP68 protection against water and dust ingress at depths of up to 15ft / 5m

MODIFICATION AND CUSTOMIZATION

SLAYSON is able to modify our products to suit your needs! Custom sizes available on request.

SPECIFICATIONS

- Submersible to 15 ft / 5 m
- Manufactured from 14 gauge Type 316 Marine Grade Stainless Steel
- Seams continuously welded
- Single piece Neoprene gasket
- 316 Stainless Hardware & Fasteners
- Mounting brackets on enclosure rear for mounting
- Grounding stud on body for earthing and bonding
- Weld studs installed for optional internal mount plates
- High impact resistance

ACCESSORIES

- Internal Mount/Back Plates
- External ground mounting stand
- Custom entry holes
- IP68 Stainless Steel cable glands / chord grips
- EMC / EMI / RFI Protection Available
- Hinged Lid
- Welded in place Threaded Bosses
- Optical Viewing Window
- Shock & Vibration Protection
- Variety of Finishes
- Fluorosilicone (FVMQ) Gasket

PART NUMBER	A	B	C	D Mount	E Mount	BACK PLATE PART NUMBER	Height:	Width:	Gauge	Weight (lbs)
	Height: in (mm)	Width: in (mm)	Depth: in (mm)	Height: in (mm)	Width: in (mm)		in (mm)	in (mm)		
JSMI181810	18 (457.2)	18 (457.2)	10 (254)	16 (406.4)	20 (508)	ASPI1616	16 (406.4)	16 (406.4)	14	25
JSMI161606	16 (406.4)	16 (406.4)	06 (152.4)	14 (355.6)	18 (457.2)	ASPI1414	14 (355.6)	14 (355.6)	14	20
JSMI161406	16 (406.4)	14 (355.6)	06 (152.4)	14 (355.6)	16 (406.4)	ASPI1412	14 (355.6)	12 (304.8)	14	19
JSMI141405	14 (355.6)	14 (355.6)	05 (127)	12 (304.8)	16 (406.4)	ASPI1212	12 (304.8)	12 (304.8)	14	18
JSMI121204	12 (304.8)	12 (304.8)	04 (101.6)	10 (254)	14 (355.6)	ASPI1010	10 (254)	10 (254)	14	15
JSMI121004	12 (304.8)	10 (254)	04 (101.6)	10 (254)	12 (304.8)	ASPI1008	10 (254)	08 (203.2)	14	14
JSMI101004	10 (254)	10 (254)	04 (101.6)	10 (254)	12 (304.8)	ASPI0808	08 (203.2)	08 (203.2)	14	13
JSMI100804	10 (254)	08 (203.2)	04 (101.6)	08 (203.2)	10 (254)	ASPI0806	08 (203.2)	06 (152.4)	14	12
JSMI080804	08 (203.2)	08 (203.2)	04 (101.6)	08 (203.2)	10 (254)	ASPI0606	06 (152.4)	06 (152.4)	14	11
JSMI080604	08 (203.2)	06 (152.4)	04 (101.6)	06 (152.4)	08 (203.2)	ASPI0604	06 (152.4)	04 (101.6)	14	10
JSMI060604	06 (152.4)	06 (152.4)	04 (101.6)	04 (101.6)	08 (203.2)	ASPI0404	04 (101.6)	04 (101.6)	14	9