

MATERIAL

14 gauge | 2.00mm Stainless Steel Type 316*

FINISH

Stainless Steel #4 Surface Finish*

*Alternative color, finish & material options available on request

SPECIFICATIONS

- Submersible up to 15 ft / 5 m
- Sloped proof prevents pooling of dust & water
- Single piece Neoprene gasket
- 316 Stainless Steel Hardware & Fasteners
- Mounting brackets on enclosure rear for mounting
- Grounding stud on enclosure body for earthing & grounding
- Weld studs for optional internal backing plates & terminal blocks
- High Impact & Crush Resistance

ACCESSORIES

- Internal Mount Plate
- Hinged Lid / Door
- Optical Window Lid / Door
- Security Lock Tab
- Captive Lid Fasteners
- Internal Swing Out Panel
- Shock & Vibration Isolation Mount Kits
- 360° EMC / EMP Shielding Gasket
- External Grounding Stud
- Flurosilicone Gasket
- Heavy Duty Lifting Eye Hooks
- Raised Floor Mounting Plinths
- Heavy Duty Gusset mount tabs
- Lid / Door Stay
- Shielded Access Door (IP66)
- Pull Handle
- Document Pocket
- Welded In-Place Hubs
- Cable Glands / Cord grips
- Integrated Thermal Heatsink
- CARC Paint System (MIL-DTL-64159)

CODE

- B
- H
- O
- P
- C
- S
- V
- E
- G
- F
- L
- R
- T
- D
- A
- U
- M
- *
- *
- *
- *

INDUSTRY STANDARDS

NEMA Type 6, 6P
IP67/68 IEC 60529
IK10 Impact Resistant

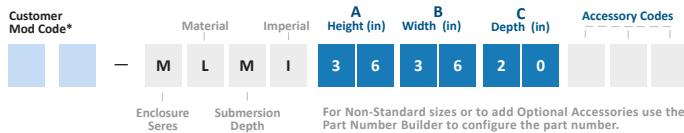
APPLICATION

SLAYSON Submersible Watershed Series offers NEMA 6P / IP68 protection against water and dust ingress at depths up to 15ft / 5m. Submersible Standard Enclosures are manufactured as standard from 14g Marine Grade 316 Stainless Steel, ensuring protection in harsh and corrosive environments.

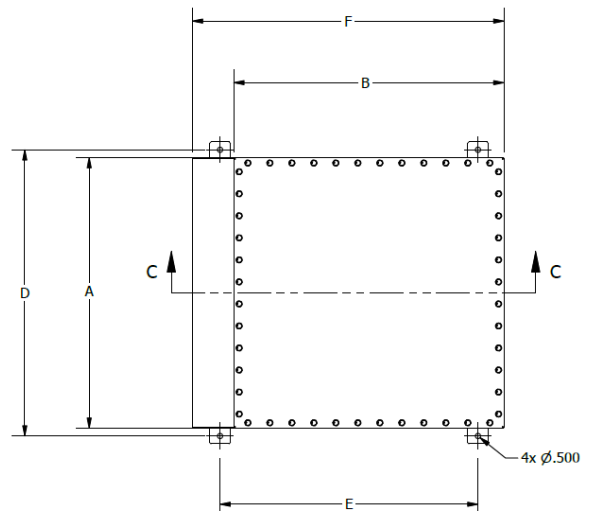
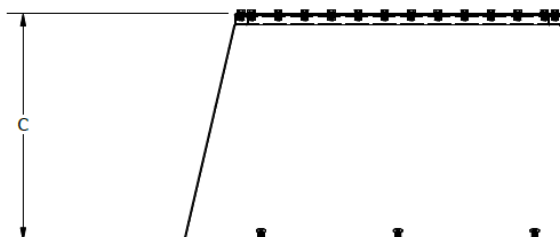
MODIFICATION AND CUSTOMIZATION

SLAYSON excels at modifying and personalizing all our Enclosure products to meet your exact specifications. Whether you require connector cutouts, marker engraving or a non-standard size. Contact our experienced Engineers about your project specific solution.

PART NUMBER BUILDER



*Generated by SLAYSON Engineering for customer specific modifications



PART NUMBER	A		B		C		D		E		F		INTERNAL MOUNT PLATE				Gauge
	Height		Width		Depth		Mount Height		Mount Width		Slope Roof Height		Height		Width		
	in	mm	in	mm	in	mm	in	mm	in	mm	in	mm	in	mm	in	mm	
WSMI363620	36	914.4	36	914.4	20	508.0	32	812.8	38	965.2	40	400.0	32	812.8	32	812.8	14
WSMI363616	36	914.4	36	914.4	16	406.4	32	812.8	38	965.2	40	400.0	32	812.8	32	812.8	14
WSMI363612	36	914.4	36	914.4	12	304.8	32	812.8	38	965.2	40	400.0	32	812.8	32	812.8	14
WSMI363020	36	914.4	30	762.0	20	508.0	32	812.8	32	812.8	34	340.0	32	812.8	26	660.4	14
WSMI363016	36	914.4	30	762.0	16	406.4	32	812.8	32	812.8	34	340.0	32	812.8	26	660.4	14
WSMI363012	36	914.4	30	762.0	12	304.8	32	812.8	32	812.8	34	340.0	32	812.8	26	660.4	14
WSMI362420	36	914.4	24	609.6	20	508.0	32	812.8	26	660.4	28	280.0	32	812.8	20	508.0	14
WSMI362416	36	914.4	24	609.6	16	406.4	32	812.8	26	660.4	28	280.0	32	812.8	20	508.0	14
WSMI362412	36	914.4	24	609.6	12	304.8	32	812.8	26	660.4	28	280.0	32	812.8	20	508.0	14
WSMI343416	34	863.6	34	863.6	16	406.4	30	762.0	36	914.4	38	380.0	30	762.0	30	762.0	14
WSMI343412	34	863.6	34	863.6	12	304.8	30	762.0	36	914.4	38	380.0	30	762.0	30	762.0	14
WSMI343410	34	863.6	34	863.6	10	254.0	30	762.0	36	914.4	38	380.0	30	762.0	30	762.0	14
WSMI342816	34	863.6	28	711.2	16	406.4	30	762.0	30	762.0	32	320.0	30	762.0	24	609.6	14
WSMI342812	34	863.6	28	711.2	12	304.8	30	762.0	30	762.0	32	320.0	30	762.0	24	609.6	14
WSMI342810	34	863.6	28	711.2	10	254.0	30	762.0	30	762.0	32	320.0	30	762.0	24	609.6	14
WSMI342416	34	863.6	24	609.6	16	406.4	30	762.0	26	660.4	28	280.0	30	762.0	20	508.0	14
WSMI342412	34	863.6	24	609.6	12	304.8	30	762.0	26	660.4	28	280.0	30	762.0	20	508.0	14
WSMI342410	34	863.6	24	609.6	10	254.0	30	762.0	26	660.4	28	280.0	30	762.0	20	508.0	14
WSMI303016	30	762.0	30	762.0	16	406.4	26	660.4	32	812.8	34	340.0	26	660.4	26	660.4	14
WSMI303012	30	762.0	30	762.0	12	304.8	26	660.4	32	812.8	34	340.0	26	660.4	26	660.4	14
WSMI303010	30	762.0	30	762.0	10	254.0	26	660.4	32	812.8	34	340.0	26	660.4	26	660.4	14
WSMI302416	30	762.0	24	609.6	16	406.4	26	660.4	26	660.4	28	280.0	26	660.4	20	508.0	14
WSMI302412	30	762.0	24	609.6	12	304.8	26	660.4	26	660.4	28	280.0	26	660.4	20	508.0	14
WSMI302410	30	762.0	24	609.6	10	254.0	26	660.4	26	660.4	28	280.0	26	660.4	20	508.0	14
WSMI302015	30	762.0	20	508.0	16	406.4	26	660.4	22	558.8	24	240.0	26	660.4	16	406.4	14
WSMI302012	30	762.0	20	508.0	12	304.8	26	660.4	22	558.8	24	240.0	26	660.4	16	406.4	14
WSMI302010	30	762.0	20	508.0	10	254.0	26	660.4	22	558.8	24	240.0	26	660.4	16	406.4	14
WSMI282816	28	711.2	28	711.2	16	406.4	24	609.6	30	762.0	32	320.0	24	609.6	24	609.6	14
WSMI282812	28	711.2	28	711.2	12	304.8	24	609.6	30	762.0	32	320.0	24	609.6	24	609.6	14
WSMI282810	28	711.2	28	711.2	10	254.0	24	609.6	30	762.0	32	320.0	24	609.6	24	609.6	14
WSMI282216	28	711.2	22	558.8	16	406.4	24	609.6	24	609.6	26	260.0	24	609.6	18	457.2	14
WSMI282212	28	711.2	22	558.8	12	304.8	24	609.6	24	609.6	26	260.0	24	609.6	18	457.2	14
WSMI282210	28	711.2	22	558.8	10	254.0	24	609.6	24	609.6	26	260.0	24	609.6	18	457.2	14
WSMI281812	28	711.2	18	457.2	12	304.8	24	609.6	20	508.0	22	220.0	24	609.6	14	355.6	14
WSMI281810	28	711.2	18	457.2	10	254.0	24	609.6	20	508.0	22	220.0	24	609.6	14	355.6	14
WSMI281808	28	711.2	18	457.2	08	203.2	24	609.6	20	508.0	22	220.0	24	609.6	14	355.6	14
WSMI262612	26	660.4	26	660.4	12	304.8	22	558.8	28	711.2	30	300.0	22	558.8	22	558.8	14
WSMI262610	26	660.4	26	660.4	10	254.0	22	558.8	28	711.2	30	300.0	22	558.8	22	558.8	14
WSMI262608	26	660.4	26	660.4	08	203.2	22	558.8	28	711.2	30	300.0	22	558.8	22	558.8	14
WSMI262012	26	660.4	20	508.0	12	304.8	22	558.8	22	558.8	24	240.0	22	558.8	16	406.4	14
WSMI262010	26	660.4	20	508.0	10	254.0	22	558.8	22	558.8	24	240.0	22	558.8	16	406.4	14
WSMI262008	26	660.4	20	508.0	08	203.2	22	558.8	22	558.8	24	240.0	22	558.8	16	406.4	14
WSMI261612	26	660.4	16	406.4	12	304.8	22	558.8	18	457.2	20	200.0	22	558.8	12	304.8	14
WSMI261610	26	660.4	16	406.4	10	254.0	22	558.8	18	457.2	20	200.0	22	558.8	12	304.8	14
WSMI261608	26	660.4	16	406.4	08	203.2	22	558.8	18	457.2	20	200.0	22	558.8	12	304.8	14
WSMI242412	24	609.6	24	609.6	12	304.8	20	508.0	26	660.4	28	280.0	20	508.0	20	508.0	14
WSMI242410	24	609.6	24	609.6	10	254.0	20	508.0	26	660.4	28	280.0	20	508.0	20	508.0	14
WSMI242408	24	609.6	24	609.6	08	203.2	20	508.0	26	660.4	28	280.0	20	508.0	20	508.0	14
WSMI241812	24	609.6	18	457.2	12	304.8	20	508.0	20	508.0	22	220.0	20	508.0	14	355.6	14
WSMI241810	24	609.6	18	457.2	10	254.0	20	508.0	20	508.0	22	220.0	20	508.0	14	355.6	14
WSMI241808	24	609.6	18	457.2	08	203.2	20	508.0	20	508.0	22	220.0	20	508.0	14	355.6	14
WSMI241412	24	609.6	14	355.6	12	304.8	20	508.0	16	406.4	18	180.0	20	508.0	10	254.0	14
WSMI241410	24	609.6	14	355.6	10	254.0	20	508.0	16	406.4	18	180.0	20	508.0	10	254.0	14
WSMI241408	24	609.6	14	355.6	08	203.2	20	508.0	16	406.4	18	180.0	20	508.0	10	254.0	14