

SPECIFICATIONS

- Prolonged Submersible up to 15 ft / 5 mtr (IEC 60529)
- Corrosion Resistant Salt Spray Test (ASTM B117)
- Stainless Steel Type 316 Fasteners & Hardware
- Trough Collar Sealing Flange
- Seams continuously welded and ground smooth
- Single piece Neoprene Gasket
- Internal T Weld Nut fastening locations for optional Back Plate accessory
- High Impact & Crush Resistance (IK10)

MATERIAL

14 gauge | 2.00mm Stainless Steel Type 316*

FINISH

Stainless Steel #4 Surface Finish*

*Alternative finish & material options available on request

INDUSTRY STANDARDS

NEMA Type 6, 6P
IP67/68 IEC 60529
IK10 Impact Resistant

APPLICATION

The COMPACT SUBMERSIBLE Enclosure is the industry standard for power & utility, infrastructure and renewal energy companies requiring ultimate protection against extreme environmental conditions. Manufactured from corrosion resistant Stainless Steel Type 316 and a single piece Neoprene Gasket to provide watertight protection of vital electrical equipment. SLAYSON's COMPACT SUBMERSIBLE range of enclosures and accessories deliver a reliable enclosures system to meet all industry environmental challenges.

MODIFICATION AND CUSTOMIZATION

SLAYSON excels at modifying and personalizing all our Enclosure products to meet your exact specifications. Whether you require cutouts, welded in-place bosses or a non-standard size. Contact our experienced Engineers about your project specific solution.

OPTIONAL ACCESSORIES

- Internal Mount/Back Plates
- Hinged Lid
- Optical Window Lid
- Padlock Tab
- Captive Lid Fasteners
- Internal Swing out Panel
- Welded in place Threaded Bosses
- Stainless Steel Type 316 Cable Glands / Cord grips
- Seismic Shock & Vibration Isolation Mount Kit
- Dual Gasket Beryllium Copper for 360° EMC / RFI Shielding
- External Grounding Stud
- Heavy Duty Lifting Eye Hooks
- Raised Floor Mounting Plinths

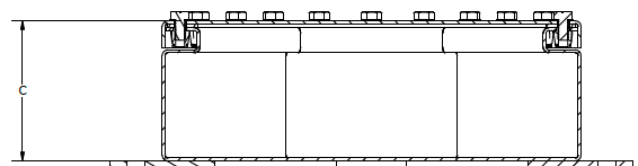
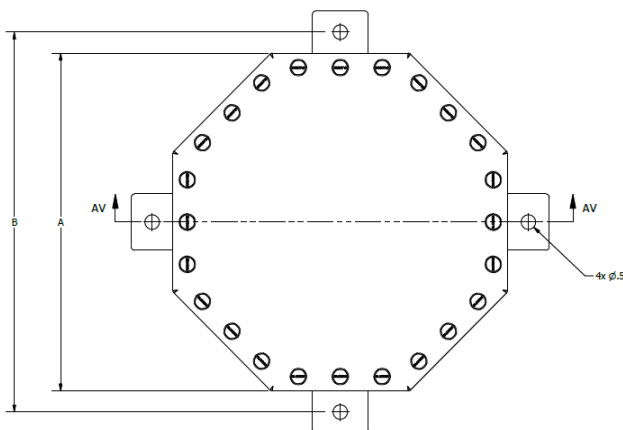
CODE

- B
- H
- O
- L
- C
- S

PART NUMBER BUILDER

Customer Mod Code*	Material	Imperial	A Height (cm)	B Width (cm)	C Depth (cm)	Accessory Codes
-	O S M I		3 6	3 6	2 2	
	Enclosure Series	Submersion Depth	For Non-Standard sizes or to add Optional Accessories use the Part Number Builder to configure the part number.			

*Generated by SLAYSON Engineering for customer specific modifications



PART NUMBER	A		A		C		B		INTERNAL MOUNT PLATE				Gauge
	Height (AF)		Width (AF)		Depth		Mount Height		Height (AF)		Width (AF)		
	in	mm	in	mm	in	mm	in	mm	in	mm	in	mm	
OSMI363622	36	914.4	36	914.4	22	558.8	38	406.4	34	863.6	34	863.6	14
OSMI343420	34	863.6	34	863.6	20	508.0	36	914.4	32	406.4	32	406.4	14
OSMI303018	30	762.0	30	762.0	18	457.2	32	355.6	28	355.6	28	355.6	14
OSMI262614	26	660.4	26	660.4	14	355.6	28	355.6	24	609.6	24	609.6	14
OSMI242412	24	609.6	24	609.6	12	304.8	26	660.4	22	558.8	22	558.8	14
OSMI222212	22	558.8	22	558.8	12	304.8	24	609.6	20	508.0	20	508.0	14
OSMI202012	20	508.0	20	508.0	12	304.8	22	558.8	18	457.2	18	457.2	14
OSMI181810	18	457.2	18	457.2	10	254.0	20	508.0	16	406.4	16	406.4	14
OSMI161610	16	406.4	16	406.4	10	254.0	18	457.2	14	355.6	14	355.6	14
OSMI141410	14	355.6	14	355.6	10	254.0	16	406.4	12	304.8	12	304.8	14
OSMI121208	12	304.8	12	304.8	8	203.2	14	355.6	10	254.0	10	254.0	14