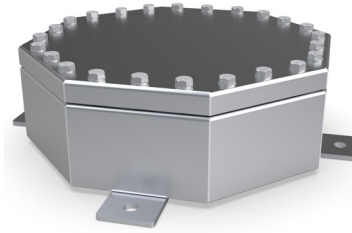
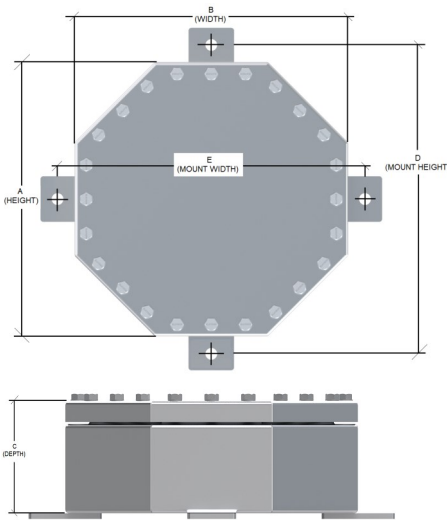




SUBMERSIBLE OCTABOX SERIES

NEMA 6P



SPECIFICATIONS

- Submersible up to 15 ft / 5 m
- Manufactured from 14g Type 316 Marine Grade Stainless Steel (available in Aluminum)
- Seams continuously welded and ground smooth
- Single piece Neoprene gasket
- 316 Stainless Steel Hardware & Fasteners
- Mounting brackets on enclosure rear for mounting
- Grounding stud on enclosure body for earthing & grounding
- Weld studs for optional internal backing plates & terminal blocks
- High Impact & Crush Resistance

INDUSTRY STANDARDS

Engineered for NEMA Type 6P requirements
(meets NEMA 4,4X,6P and IP68)

APPLICATION

SLAYSON Submersible **Octabox Series** offers NEMA 6P / IP68 protection against water and dust ingress at depths up to 15ft / 5m. Submersible Standard Enclosures are manufactured as standard from 14g Marine Grade 316 Stainless Steel, ensuring protection in harsh and corrosive environments.

MODIFICATION AND CUSTOMIZATION

SLAYSON excels at modifying and customizing all our products to meet your exact specifications. Contact our experienced Engineers about your project specific solution.

PART NUMBER MATERIAL CODE BUILDER

OSMI—Type 316 Marine Grade Stainless Steel (14g)

OAMI—Aluminum (0.064")

ACCESSORIES

- Internal Mount/Back Plates
- External ground mounting stand
- Custom entry holes
- IP68 Stainless Steel cable glands / chord grips
- EMC / EMI / RFI Shielding (MIL-STD-285)
- Hinged Lid
- Hinged Internal Lid
- Welded in place Threaded Bosses
- Finish options available
- Shock & Vibration Protection (MIL-STD-810)
- Optical Viewing Window

PART NUMBER	A	B	C	D	E	BACK PLATE PART NUMBER	Height:	Width:	Gauge	Weight (lbs)
	Height: in	Width: in	Depth: in	Mount Height: in	Mount Width: in		in	in		
OSMI363622	36	36	22	38	38	OSPI3434	34	34	14	53
OSMI343420	34	34	20	36	36	OSPI3232	32	32	14	45
OSMI303018	30	30	18	32	32	OSPI2828	28	28	14	51
OSMI262614	26	26	14	28	28	OSPI2424	24	24	14	40
OSMI242412	24	24	12	26	26	OSPI2222	22	22	14	35
OSMI222212	22	22	12	24	24	OSPI2020	20	20	14	32
OSMI202012	20	20	12	22	22	OSPI1818	18	18	14	32
OSMI181810	18	18	10	20	20	OSPI1616	16	16	14	30
OSMI161610	16	16	10	18	18	OSPI1414	14	14	14	27
OSMI141410	14	14	10	16	16	OSPI1212	12	12	14	25
OSMI121208	12	12	08	14	14	OSPI1010	10	10	14	22