

**SPECIFICATIONS**

- NEMA 6P and IP68
- Submersible up to 15 ft / 5 mtr (IEC 60529)
- Corrosion Resistant Salt Spray Test (ASTM B117)
- Rugged Design & Construction
- Seams continuously welded and ground smooth
- Single piece Neoprene Gasket
- Dual Gasket Beryllium Copper
- 360° Shielding EMC / RFI (MIL-STD-285)
- Interlock Corner Mounting locations
- Internal Threaded Collar Stud locations for Internal Mount Plate [B]
- High Impact & Crush Resistance (IK10)
- Designed to withstand Shock & Vibration (MIL-STD-810)

**INDUSTRY STANDARDS**

NEMA Type 6, 6P  
 IP67/68 IEC 60529  
 IK10 Impact Resistant  
 MIL-STD- 810, MIL-STD-285

**APPLICATION**

The MIL-XP-68 INTERLOCK BOX offers reliable protection for military systems, vehicles and electronic hardware deployed in the harshest environments. This Enclosure has hermetic sealing preventing any ingress of dust and water, with dual Beryllium Copper gasket to insure complete 360° EMC/EMP immunity. The MIL-XP-68 INTERLOCK BOX offers a COTS range of enclosures and accessories delivering a proven flexible enclosure system to military specification.

**MODIFICATION AND CUSTOMIZATION**

SLAYSON® excels at modifying and customizing all our products to meet your exact specifications. Whether you require, connector through hole cutouts, welded in-place accessories, or a non- standard size. Contact our experienced Engineers about your project specific solution.

**MATERIAL**

Aluminum 0.120" | 3.00mm\*

**CODE**

A

**FINISH**

Desert Sand AMS-STD-595 color 33446, RAL 1015

D

Olive Drab AMS-STD-595 color 24097, RAL6022

O

\*Alternative finish & material options available

**ACCESSORIES**

Internal Mount Plate	B
Hinged Lid / Door	H
Optical Window Lid / Door	O
Security Lock Tab	P
Nameplate	N
Captive Lid Fasteners	C
Internal Swing Out Panel	S
Shock & Vibration Mount Kit	V
External Grounding Stud	G
Lifting Eye Hooks	L
Heavy Duty Gusset mount tabs	T
Access Door (IP66)	A
Pull Handle	U
Document Pocket	M
Welded In-Place Hubs	*
Welded In-Place Studs	*
Cable Glands / Cord grips	*
NPT Cable Glands	*
Integrated Thermal Heatsink	*
CARC Paint System	*

\*Customer Modification Code is required when the Accessory component selected requires any of the following: enclosure cutouts, through holes or penetrations, customer involved design for accessory placement. This code is added in front of the part number by SLAYSON® to provide a unique identifier for customer specific engineering data.

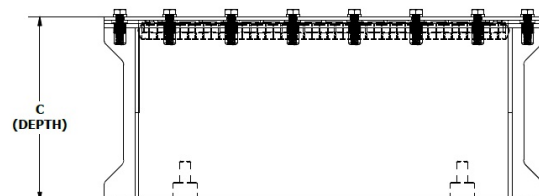
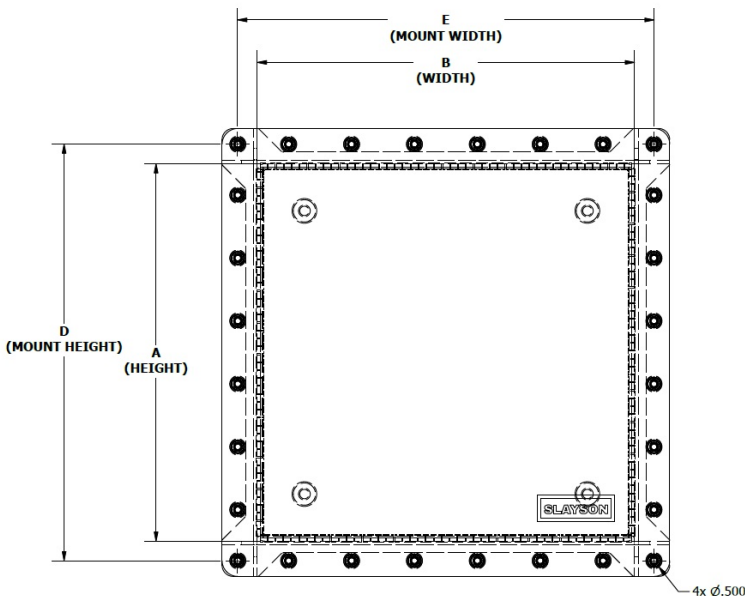
**PART NUMBER BUILDER**

Customer Mod Code*	Material	Imperial	A Height (cm)	B Width (cm)	C Depth (cm)	Accessory Codes
	P	A	D	I	2 4 2 4 1 6	

Enclosure Series

Finish

For Non-Standard sizes or to add Optional Accessories use the Part Number Builder to configure the part number.



PART NUMBER	A		B		C		D		E		INTERNAL MOUNT PLATE				Gauge
	Height		Width		Depth		Mount Height		Mount Width		Height		Width		
	in	mm	in	mm	in	mm	in	mm	in	mm	in	mm	in	mm	
PADI242416	24	609.6	24	609.6	16	406.4	25.25	641.4	25.25	641.4	22	558.8	22	558.8	0.120"
PADI242412	24	609.6	24	609.6	12	304.8	25.25	641.4	25.25	641.4	22	558.8	22	558.8	0.120"
PADI242214	24	609.6	22	558.8	14	355.6	25.25	641.4	23.25	590.6	22	558.8	20	508.0	0.120"
PADI242012	24	609.6	20	508.0	12	304.8	25.25	641.4	21.25	539.8	22	558.8	18	457.2	0.120"
PADI241810	24	609.6	18	457.2	10	254.0	25.25	641.4	19.25	489.0	22	558.8	16	406.4	0.120"
PADI222216	22	558.8	22	558.8	16	406.4	23.25	590.6	23.25	590.6	20	508.0	20	508.0	0.120"
PADI222212	22	558.8	22	558.8	12	304.8	23.25	590.6	23.25	590.6	20	508.0	20	508.0	0.120"
PADI222014	22	558.8	20	508.0	14	355.6	23.25	590.6	21.25	539.8	20	508.0	18	457.2	0.120"
PADI221812	22	558.8	18	457.2	12	304.8	23.25	590.6	19.25	489.0	20	508.0	16	406.4	0.120"
PADI221610	22	558.8	16	406.4	10	254.0	23.25	590.6	17.25	438.2	20	508.0	14	355.6	0.120"
PADI202014	20	508.0	20	508.0	14	355.6	21.25	539.8	21.25	539.8	18	457.2	18	457.2	0.120"
PADI202010	20	508.0	20	508.0	10	254.0	21.25	539.8	21.25	539.8	18	457.2	18	457.2	0.120"
PADI201812	20	508.0	18	457.2	12	304.8	21.25	539.8	19.25	489.0	18	457.2	16	406.4	0.120"
PADI201610	20	508.0	16	406.4	10	254.0	21.25	539.8	17.25	438.2	18	457.2	14	355.6	0.120"
PADI201408	20	508.0	14	355.6	08	203.2	21.25	539.8	15.25	387.4	18	457.2	12	304.8	0.120"
PADI181814	18	457.2	18	457.2	14	355.6	19.25	489.0	19.25	489.0	16	406.4	16	406.4	0.120"
PADI181810	18	457.2	18	457.2	10	254.0	19.25	489.0	19.25	489.0	16	406.4	16	406.4	0.120"
PADI181612	18	457.2	16	406.4	12	304.8	19.25	489.0	17.25	438.2	16	406.4	14	355.6	0.120"
PADI181410	18	457.2	14	355.6	10	254.0	19.25	489.0	15.25	387.4	16	406.4	12	304.8	0.120"
PADI181208	18	457.2	12	304.8	08	203.2	19.25	489.0	13.25	336.6	16	406.4	10	254.0	0.120"
PADI161612	16	406.4	16	406.4	12	304.8	17.25	438.2	17.25	438.2	14	355.6	14	355.6	0.120"
PADI161610	16	406.4	16	406.4	10	254.0	17.25	438.2	17.25	438.2	14	355.6	14	355.6	0.120"
PADI161410	16	406.4	14	355.6	10	254.0	17.25	438.2	15.25	387.4	14	355.6	12	304.8	0.120"
PADI161208	16	406.4	12	304.8	08	203.2	17.25	438.2	13.25	336.6	14	355.6	10	254.0	0.120"
PADI161006	16	406.4	10	254.0	06	152.4	17.25	438.2	11.25	285.8	14	355.6	08	203.2	0.120"
PADI141410	14	355.6	14	355.6	10	254.0	15.25	387.4	15.25	387.4	12	304.8	12	304.8	0.120"
PADI141408	14	355.6	14	355.6	08	203.2	15.25	387.4	15.25	387.4	12	304.8	12	304.8	0.120"
PADI141208	14	355.6	12	304.8	08	203.2	15.25	387.4	13.25	336.6	12	304.8	10	254.0	0.120"
PADI141006	14	355.6	10	254.0	06	152.4	15.25	387.4	11.25	285.8	12	304.8	08	203.2	0.120"
PADI140804	14	355.6	08	203.2	04	101.6	15.25	387.4	9.25	235.0	12	304.8	06	152.4	0.120"
PADI121210	12	304.8	12	304.8	10	254.0	13.25	336.6	13.25	336.6	10	254.0	10	254.0	0.120"
PADI121208	12	304.8	12	304.8	08	203.2	13.25	336.6	13.25	336.6	10	254.0	10	254.0	0.120"
PADI121008	12	304.8	10	254.0	08	203.2	13.25	336.6	11.25	285.8	10	254.0	08	203.2	0.120"
PADI120806	12	304.8	08	203.2	06	152.4	13.25	336.6	9.25	235.0	10	254.0	06	152.4	0.120"
PADI120604	12	304.8	06	152.4	04	101.6	13.25	336.6	7.25	184.2	10	254.0	04	101.6	0.120"
PADI101008	10	254.0	10	254.0	08	203.2	11.25	285.8	11.25	285.8	08	203.2	08	203.2	0.120"
PADI101006	10	254.0	10	254.0	06	152.4	11.25	285.8	11.25	285.8	08	203.2	08	203.2	0.120"
PADI100806	10	254.0	08	203.2	06	152.4	11.25	285.8	9.25	235.0	08	203.2	06	152.4	0.120"
PADI100604	10	254.0	06	152.4	04	101.6	11.25	285.8	7.25	184.2	08	203.2	05	127.0	0.120"
PADI080806	08	203.2	08	203.2	06	152.4	9.25	235.0	9.25	235.0	06	152.4	04	101.6	0.120"
PADI080604	08	203.2	06	152.4	04	101.6	9.25	235.0	7.25	184.2	06	152.4	04	101.6	0.120"