

SPECIFICATIONS

- NEMA 6P and IP68
- Submersible up to 15 ft / 5 mtr (IEC 60529)
- Corrosion Resistant Salt Spray Test (ASTM B117)
- Rugged Design & Construction
- Seams continuously welded and ground smooth
- Single piece Neoprene Gasket
- Dual Gasket Beryllium Copper
- 360° Shielding EMC / RFI (MIL-STD-285)
- Interlock Corner Mounting locations
- Internal Threaded Collar Stud locations for Internal Mount Plate [B]
- High Impact & Crush Resistance (IK10)
- Designed to withstand Shock & Vibration (MIL-STD-810)

INDUSTRY STANDARDS

NEMA Type 6, 6P
 IP67/68 IEC 60529
 IK10 Impact Resistant
 MIL-STD- 810, MIL-STD-285

APPLICATION

The MIL-XP-68 INTERLOCK BOX offers reliable protection for military systems, vehicles and electronic hardware deployed in the harshest environments. This Enclosure has hermetic sealing preventing any ingress of dust and water, with dual Beryllium Copper gasket to insure complete 360° EMC/EMP immunity. The MIL-XP-68 INTERLOCK BOX offers a COTS range of enclosures and accessories delivering a proven flexible enclosure system to military specification.

MODIFICATION AND CUSTOMIZATION

SLAYSON® excels at modifying and customizing all our products to meet your exact specifications. Whether you require, connector through hole cutouts, welded in-place accessories, or a non- standard size. Contact our experienced Engineers about your project specific solution.

MATERIAL

Aluminum 0.120" | 3.00mm*

CODE

A

FINISH

Desert Sand AMS-STD-595 color 33446, RAL 1015*

D

Olive Drab AMS-STD-595 color 24097, RAL6022*

O

*Alternative finish & material options available

ACCESSORIES

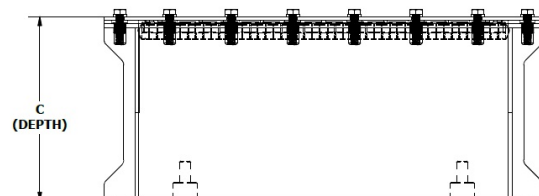
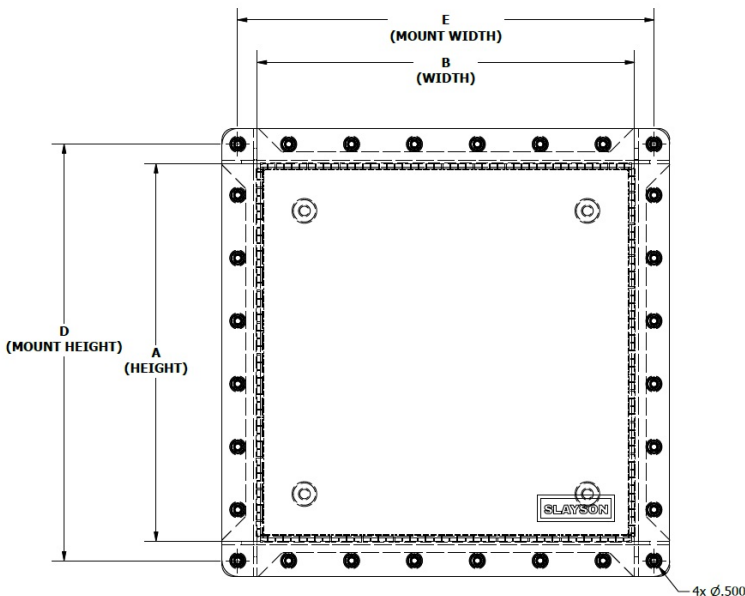
Internal Mount Plate	B
Hinged Lid / Door	H
Optical Window Lid / Door	O
Security Lock Tab	P
Nameplate	N
Captive Lid Fasteners	C
Internal Swing Out Panel	S
Shock & Vibration Mount Kit	V
External Grounding Stud	G
Lifting Eye Hooks	L
Heavy Duty Gusset mount tabs	T
Access Door (IP66)	A
Pull Handle	U
Document Pocket	M
Welded In-Place Hubs	*
Welded In-Place Studs	*
Cable Glands / Cord grips	*
NPT Cable Glands	*
Integrated Thermal Heatsink	*
CARC Paint System	*

*Customer Modification Code is required when the Accessory component selected requires any of the following: enclosure cutouts, through holes or penetrations, customer involved design for accessory placement. This code is added in front of the part number by SLAYSON® to provide a unique identifier for the customer specific engineering data.

PART NUMBER BUILDER

Customer Mod Code*	Material	Imperial	A Height (cm)	B Width (cm)	C Depth (cm)	Accessory Codes
	P	A	6	0	6	0
	D		4	0		

For Non-Standard sizes or to add Optional Accessories use the Part Number Builder to configure the part number.



PART NUMBER	A		B		C		D		E		INTERNAL MOUNT PLATE				Gauge mm
	Height		Width		Depth		Mount Height		Mount Width		Height		Width		
	cm	mm	cm	mm	cm	mm	cm	mm	cm	mm	cm	mm	cm	mm	
PAD606040	60	600.0	60	600.0	40	400.0	63	630.0	63	630.0	55	550.0	55	550.0	3.00
PAD606030	60	600.0	60	600.0	30	300.0	63	630.0	63	630.0	55	550.0	55	550.0	3.00
PAD605535	60	600.0	55	550.0	35	350.0	63	630.0	58	580.0	55	550.0	50	500.0	3.00
PAD605030	60	600.0	50	500.0	30	300.0	63	630.0	53	530.0	55	550.0	45	450.0	3.00
PAD604525	60	600.0	45	450.0	25	250.0	63	630.0	48	480.0	55	550.0	40	400.0	3.00
PAD555540	55	550.0	55	550.0	40	400.0	58	580.0	58	580.0	50	500.0	50	500.0	3.00
PAD555530	55	550.0	55	550.0	30	300.0	58	580.0	58	580.0	50	500.0	50	500.0	3.00
PAD555035	55	550.0	50	500.0	35	350.0	58	580.0	53	530.0	50	500.0	45	450.0	3.00
PAD554530	55	550.0	45	450.0	30	300.0	58	580.0	48	480.0	50	500.0	40	400.0	3.00
PAD554025	55	550.0	40	400.0	25	250.0	58	580.0	43	430.0	50	500.0	35	350.0	3.00
PAD505035	50	500.0	50	500.0	35	350.0	53	530.0	53	530.0	45	450.0	45	450.0	3.00
PAD505025	50	500.0	50	500.0	25	250.0	53	530.0	53	530.0	45	450.0	45	450.0	3.00
PAD504530	50	500.0	45	450.0	30	300.0	53	530.0	48	480.0	45	450.0	40	400.0	3.00
PAD504025	50	500.0	40	400.0	25	250.0	53	530.0	43	430.0	45	450.0	35	350.0	3.00
PAD503520	50	500.0	35	350.0	20	200.0	53	530.0	38	380.0	45	450.0	30	300.0	3.00
PAD454535	45	450.0	45	450.0	35	350.0	48	480.0	48	480.0	40	400.0	40	400.0	3.00
PAD454525	45	450.0	45	450.0	25	250.0	48	480.0	48	480.0	40	400.0	40	400.0	3.00
PAD454030	45	450.0	40	400.0	30	300.0	48	480.0	43	430.0	40	400.0	35	350.0	3.00
PAD453525	45	450.0	35	350.0	25	250.0	48	480.0	38	380.0	40	400.0	30	300.0	3.00
PAD453020	45	450.0	30	300.0	20	200.0	48	480.0	33	330.0	40	400.0	25	250.0	3.00
PAD404030	40	400.0	40	400.0	30	300.0	43	430.0	43	430.0	35	350.0	35	350.0	3.00
PAD404025	40	400.0	40	400.0	25	250.0	43	430.0	43	430.0	35	350.0	35	350.0	3.00
PAD403525	40	400.0	35	350.0	25	250.0	43	430.0	38	380.0	35	350.0	30	300.0	3.00
PAD403020	40	400.0	30	300.0	20	200.0	43	430.0	33	330.0	35	350.0	25	250.0	3.00
PAD402515	40	400.0	25	250.0	15	150.0	43	430.0	28	280.0	35	350.0	20	200.0	3.00
PAD353525	35	350.0	35	350.0	25	250.0	38	380.0	38	380.0	30	300.0	30	300.0	3.00
PAD353520	35	350.0	35	350.0	20	200.0	38	380.0	38	380.0	30	300.0	30	300.0	3.00
PAD353020	35	350.0	30	300.0	20	200.0	38	380.0	33	330.0	30	300.0	25	250.0	3.00
PAD352515	35	350.0	25	250.0	15	150.0	38	380.0	28	280.0	30	300.0	20	200.0	3.00
PAD352010	35	350.0	20	200.0	10	100.0	38	380.0	23	230.0	30	300.0	15	150.0	3.00
PAD303025	30	300.0	30	300.0	25	250.0	33	330.0	33	330.0	25	250.0	25	250.0	3.00
PAD303020	30	300.0	30	300.0	20	200.0	33	330.0	33	330.0	25	250.0	25	250.0	3.00
PAD302520	30	300.0	25	250.0	20	200.0	33	330.0	28	280.0	25	250.0	20	200.0	3.00
PAD302015	30	300.0	20	200.0	15	150.0	33	330.0	23	230.0	25	250.0	15	150.0	3.00
PAD301510	30	300.0	15	150.0	10	100.0	33	330.0	18	180.0	25	250.0	10	100.0	3.00
PAD252520	25	250.0	25	250.0	20	200.0	28	280.0	28	280.0	20	200.0	20	200.0	3.00
PAD252515	25	250.0	25	250.0	15	150.0	28	280.0	28	280.0	20	200.0	20	200.0	3.00
PAD252015	25	250.0	20	200.0	15	150.0	28	280.0	23	230.0	20	200.0	15	150.0	3.00
PAD251510	25	250.0	15	150.0	10	100.0	28	280.0	18	180.0	20	200.0	10	100.0	3.00
PAD202015	20	200.0	20	200.0	15	150.0	23	230.0	23	230.0	15	150.0	15	150.0	3.00
PAD201510	20	200.0	15	150.0	10	100.0	23	230.0	18	180.0	15	150.0	10	100.0	3.00