

MATERIAL

0.080" | 2.00mm Aluminum*

FINISH

Standard Colors*

- Desert Sand AMS-STD-595 color 33446, RAL 101
 - Olive Drab AMS-STD-595 color 34088, RAL 601
- Exterior Paint Finish over Chromate Conversion Coating pre-treatment all surfaces *Alternative color, finish & material options available on request

SPECIFICATIONS

- Submersible up to 15 ft / 5 mtr (IEC 60529)
- Rugged Design & Construction
- Excellent Passive Thermal Properties
- Seams continuously welded and ground smooth
- Single piece Neoprene Gasket
- Dual Gasket Beryllium Copper
- 360° Shielding EMC / EMP (MIL-STD-285)
- Interlock Corner Mounting locations
- Internal Weld Nut fastening locations for optional Back Plate accessory
- High Impact & Crush Resistance (IK10)
- Designed to withstand Shock & Vibration (MIL-STD-810)
- High Impact & Crush Resistance

INDUSTRY STANDARDS

IP67/68 IEC 60529
 IK10 Impact Resistant
 MIL-STD- 810, MIL-STD-285

APPLICATION

The MIL-XP-68 INTERLOCK BOX offers reliable protection for military systems, vehicles and electronic hardware deployed in the harshest environments. This Enclosure has hermetic sealing preventing any ingress of dust and water, with dual Beryllium Copper gasket to insure complete 360° EMC/EMP immunity. The MIL-XP-68 INTERLOCK BOX offers a COTS range of enclosures and accessories delivering a proven flexible enclosure system to military specification.

MODIFICATION AND CUSTOMIZATION

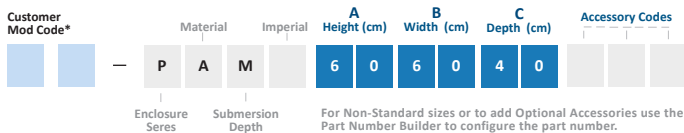
SLAYSON excels at modifying and personalizing all our Enclosure products to meet your exact specifications. Whether you require connector cutouts, marker engraving or a non-standard size. Contact our experienced Engineers about your project specific solution.

ACCESSORIES

CODE

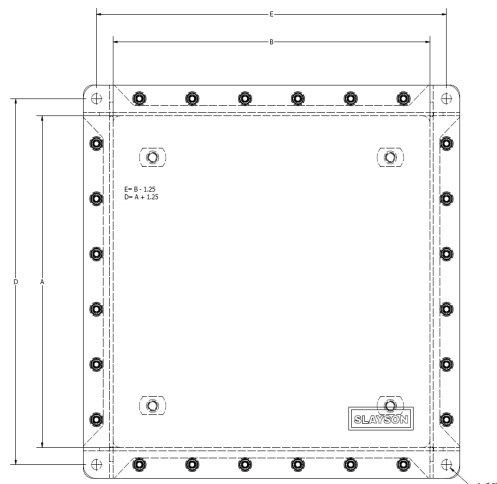
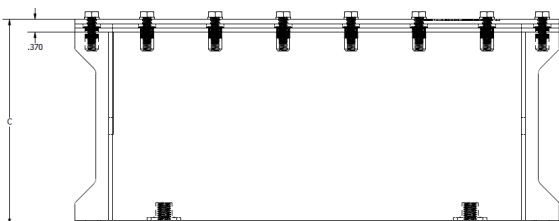
- Internal Mount Plate B
- Hinged Lid / Door H
- Optical Window Lid / Door O
- Security Lock Tab P
- Captive Lid Fasteners C
- Internal Swing Out Panel S
- Shock & Vibration Isolation Mount Kits V
- External Grounding Stud G
- Fluorosilicone Gasket F
- Heavy Duty Lifting Eye Hooks L
- Heavy Duty Gusset mount tabs T
- Shielded Access Door (IP66) A
- Pull Handle U
- Document Pocket M
- Welded In-Place Hubs *
- Cable Glands / Cord grips *
- Integrated Thermal Heatsink *
- CARC Paint System (MIL-DTL-64159) *

PART NUMBER BUILDER



*Customer Modification Code is required when the Accessory component selected requires any of the following: enclosure cutouts, through holes or penetrations, customer involved design for accessory placement. This code is added in front of the part number by SLAYSON to provide a unique identifier for the customer specific engineering data.

*Generated by SLAYSON Engineering for customer specific modifications



PART NUMBER	A		B		C		D		E		INTERNAL MOUNT PLATE				Gauge mm
	Height		Width		Depth		Mount Height		Mount Width		Height		Width		
	cm	mm	cm	mm	cm	mm	cm	mm	cm	mm	cm	mm	cm	mm	
PAM606040	60	600.0	60	600.0	40	400.0	63	630.0	63	630.0	55	550.0	55	550.0	3.00
PAM606030	60	600.0	60	600.0	30	300.0	63	630.0	63	630.0	55	550.0	55	550.0	3.00
PAM605535	60	600.0	55	550.0	35	350.0	63	630.0	58	580.0	55	550.0	50	500.0	3.00
PAM605030	60	600.0	50	500.0	30	300.0	63	630.0	53	530.0	55	550.0	45	450.0	3.00
PAM604525	60	600.0	45	450.0	25	250.0	63	630.0	48	480.0	55	550.0	40	400.0	3.00
PAM555540	55	550.0	55	550.0	40	400.0	58	580.0	58	580.0	50	500.0	50	500.0	3.00
PAM555530	55	550.0	55	550.0	30	300.0	58	580.0	58	580.0	50	500.0	50	500.0	3.00
PAM555035	55	550.0	50	500.0	35	350.0	58	580.0	53	530.0	50	500.0	45	450.0	3.00
PAM554530	55	550.0	45	450.0	30	300.0	58	580.0	48	480.0	50	500.0	40	400.0	3.00
PAM554025	55	550.0	40	400.0	25	250.0	58	580.0	43	430.0	50	500.0	35	350.0	3.00
PAM505035	50	500.0	50	500.0	35	350.0	53	530.0	53	530.0	45	450.0	45	450.0	3.00
PAM505025	50	500.0	50	500.0	25	250.0	53	530.0	53	530.0	45	450.0	45	450.0	3.00
PAM504530	50	500.0	45	450.0	30	300.0	53	530.0	48	480.0	45	450.0	40	400.0	3.00
PAM504025	50	500.0	40	400.0	25	250.0	53	530.0	43	430.0	45	450.0	35	350.0	3.00
PAM503520	50	500.0	35	350.0	20	200.0	53	530.0	38	380.0	45	450.0	30	300.0	3.00
PAM454535	45	450.0	45	450.0	35	350.0	48	480.0	48	480.0	40	400.0	40	400.0	3.00
PAM454525	45	450.0	45	450.0	25	250.0	48	480.0	48	480.0	40	400.0	40	400.0	3.00
PAM454030	45	450.0	40	400.0	30	300.0	48	480.0	43	430.0	40	400.0	35	350.0	3.00
PAM453525	45	450.0	35	350.0	25	250.0	48	480.0	38	380.0	40	400.0	30	300.0	3.00
PAM453020	45	450.0	30	300.0	20	200.0	48	480.0	33	330.0	40	400.0	25	250.0	3.00
PAM404030	40	400.0	40	400.0	30	300.0	43	430.0	43	430.0	35	350.0	35	350.0	3.00
PAM404025	40	400.0	40	400.0	25	250.0	43	430.0	43	430.0	35	350.0	35	350.0	3.00
PAM403525	40	400.0	35	350.0	25	250.0	43	430.0	38	380.0	35	350.0	30	300.0	3.00
PAM403020	40	400.0	30	300.0	20	200.0	43	430.0	33	330.0	35	350.0	25	250.0	3.00
PAM402515	40	400.0	25	250.0	15	150.0	43	430.0	28	280.0	35	350.0	20	200.0	3.00
PAM353525	35	350.0	35	350.0	25	250.0	38	380.0	38	380.0	30	300.0	30	300.0	3.00
PAM353520	35	350.0	35	350.0	20	200.0	38	380.0	38	380.0	30	300.0	30	300.0	3.00
PAM353020	35	350.0	30	300.0	20	200.0	38	380.0	33	330.0	30	300.0	25	250.0	3.00
PAM352515	35	350.0	25	250.0	15	150.0	38	380.0	28	280.0	30	300.0	20	200.0	3.00
PAM352010	35	350.0	20	200.0	10	100.0	38	380.0	23	230.0	30	300.0	15	150.0	3.00
PAM303025	30	300.0	30	300.0	25	250.0	33	330.0	33	330.0	25	250.0	25	250.0	3.00
PAM303020	30	300.0	30	300.0	20	200.0	33	330.0	33	330.0	25	250.0	25	250.0	3.00
PAM302520	30	300.0	25	250.0	20	200.0	33	330.0	28	280.0	25	250.0	20	200.0	3.00
PAM302015	30	300.0	20	200.0	15	150.0	33	330.0	23	230.0	25	250.0	15	150.0	3.00
PAM301510	30	300.0	15	150.0	10	100.0	33	330.0	18	180.0	25	250.0	10	100.0	3.00
PAM252520	25	250.0	25	250.0	20	200.0	28	280.0	28	280.0	20	200.0	20	200.0	3.00
PAM252515	25	250.0	25	250.0	15	150.0	28	280.0	28	280.0	20	200.0	20	200.0	3.00
PAM252015	25	250.0	20	200.0	15	150.0	28	280.0	23	230.0	20	200.0	15	150.0	3.00
PAM251510	25	250.0	15	150.0	10	100.0	28	280.0	18	180.0	20	200.0	10	100.0	3.00
PAM202015	20	200.0	20	200.0	15	150.0	23	230.0	23	230.0	15	150.0	15	150.0	3.00
PAM201510	20	200.0	15	150.0	10	100.0	23	230.0	18	180.0	15	150.0	10	100.0	3.00