

MATERIAL

0.080" | 2.00mm Aluminum*

FINISH

Standard Colors*

- Desert Sand AMS-STD-595 color 33446, RAL 101
 - Olive Drab AMS-STD-595 color 34088, RAL 601
- Exterior Paint Finish over Chromate Conversion Coating pre-treatment all surfaces *Alternative color, finish & material options available on request

SPECIFICATIONS

- Submersible up to 15 ft / 5 mtr (IEC 60529)
- Rugged Design & Construction
- Excellent Passive Thermal Properties
- Seams continuously welded and ground smooth
- Single piece Neoprene Gasket
- Dual Gasket Beryllium Copper
- 360° Shielding EMC / EMP (MIL-STD-285)
- Interlock Corner Mounting locations
- Internal Weld Nut fastening locations for optional Back Plate accessory
- High Impact & Crush Resistance (IK10)
- Designed to withstand Shock & Vibration (MIL-STD-810)
- High Impact & Crush Resistance

INDUSTRY STANDARDS

IP67/68 IEC 60529
 IK10 Impact Resistant
 MIL-STD-810, MIL-STD-285

APPLICATION

The MIL-XP-68 INTERLOCK BOX offers reliable protection for military systems, vehicles and electronic hardware deployed in the harshest environments. This Enclosure has hermetic sealing preventing any ingress of dust and water, with dual Beryllium Copper gasket to insure complete 360° EMC/EMP immunity. The MIL-XP-68 INTERLOCK BOX offers a COTS range of enclosures and accessories delivering a proven flexible enclosure system to military specification.

MODIFICATION AND CUSTOMIZATION

SLAYSON excels at modifying and personalizing all our Enclosure products to meet your exact specifications. Whether you require connector cutouts, marker engraving or a non-standard size. Contact our experienced Engineers about your project specific solution.

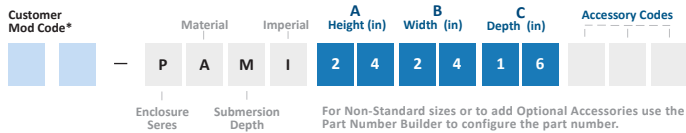
ACCESSORIES

CODE

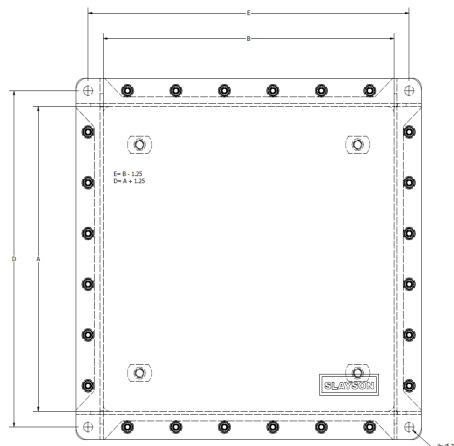
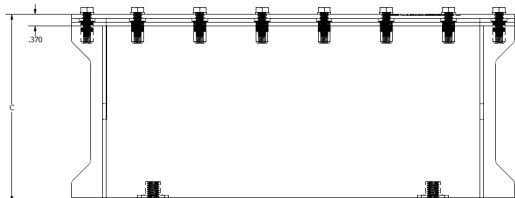
- Internal Mount Plate B
- Hinged Lid / Door H
- Optical Window Lid / Door O
- Security Lock Tab P
- Captive Lid Fasteners C
- Internal Swing Out Panel S
- Shock & Vibration Isolation Mount Kits V
- External Grounding Stud G
- Fluorosilicone Gasket F
- Heavy Duty Lifting Eye Hooks L
- Heavy Duty Gusset mount tabs T
- Shielded Access Door (IP66) A
- Pull Handle U
- Document Pocket M
- Welded In-Place Hubs *
- Cable Glands / Cord grips *
- Integrated Thermal Heatsink *
- CARC Paint System (MIL-DTL-64159) *

*Customer Modification Code is required when the Accessory component selected requires any of the following: enclosure cutouts, through holes or penetrations, customer involved design for accessory placement. This code is added in front of the part number by SLAYSON to provide a unique identifier for the customer specific engineering data.

PART NUMBER BUILDER



*Generated by SLAYSON Engineering for customer specific modifications



PART NUMBER	A		B		C		D		E		INTERNAL MOUNT PLATE				Gauge
	Height		Width		Depth		Mount Height		Mount Width		Height		Width		
	in	mm	in	mm	in	mm	in	mm	in	mm	in	mm	in	mm	
PAMI242416	24	609.6	24	609.6	16	406.4	25.25	641.4	25.25	641.4	22	558.8	22	558.8	0.120"
PAMI242412	24	609.6	24	609.6	12	304.8	25.25	641.4	25.25	641.4	22	558.8	22	558.8	0.120"
PAMI242214	24	609.6	22	558.8	14	355.6	25.25	641.4	23.25	590.6	22	558.8	20	508.0	0.120"
PAMI242012	24	609.6	20	508.0	12	304.8	25.25	641.4	21.25	539.8	22	558.8	18	457.2	0.120"
PAMI241810	24	609.6	18	457.2	10	254.0	25.25	641.4	19.25	489.0	22	558.8	16	406.4	0.120"
PAMI222216	22	558.8	22	558.8	16	406.4	23.25	590.6	23.25	590.6	20	508.0	20	508.0	0.120"
PAMI222212	22	558.8	22	558.8	12	304.8	23.25	590.6	23.25	590.6	20	508.0	20	508.0	0.120"
PAMI222014	22	558.8	20	508.0	14	355.6	23.25	590.6	21.25	539.8	20	508.0	18	457.2	0.120"
PAMI221812	22	558.8	18	457.2	12	304.8	23.25	590.6	19.25	489.0	20	508.0	16	406.4	0.120"
PAMI221610	22	558.8	16	406.4	10	254.0	23.25	590.6	17.25	438.2	20	508.0	14	355.6	0.120"
PAMI202014	20	508.0	20	508.0	14	355.6	21.25	539.8	21.25	539.8	18	457.2	18	457.2	0.120"
PAMI202010	20	508.0	20	508.0	10	254.0	21.25	539.8	21.25	539.8	18	457.2	18	457.2	0.120"
PAMI201812	20	508.0	18	457.2	12	304.8	21.25	539.8	19.25	489.0	18	457.2	16	406.4	0.120"
PAMI201610	20	508.0	16	406.4	10	254.0	21.25	539.8	17.25	438.2	18	457.2	14	355.6	0.120"
PAMI201408	20	508.0	14	355.6	08	203.2	21.25	539.8	15.25	387.4	18	457.2	12	304.8	0.120"
PAMI181814	18	457.2	18	457.2	14	355.6	19.25	489.0	19.25	489.0	16	406.4	16	406.4	0.120"
PAMI181810	18	457.2	18	457.2	10	254.0	19.25	489.0	19.25	489.0	16	406.4	16	406.4	0.120"
PAMI181612	18	457.2	16	406.4	12	304.8	19.25	489.0	17.25	438.2	16	406.4	14	355.6	0.120"
PAMI181410	18	457.2	14	355.6	10	254.0	19.25	489.0	15.25	387.4	16	406.4	12	304.8	0.120"
PAMI181208	18	457.2	12	304.8	08	203.2	19.25	489.0	13.25	336.6	16	406.4	10	254.0	0.120"
PAMI161612	16	406.4	16	406.4	12	304.8	17.25	438.2	17.25	438.2	14	355.6	14	355.6	0.120"
PAMI161610	16	406.4	16	406.4	10	254.0	17.25	438.2	17.25	438.2	14	355.6	14	355.6	0.120"
PAMI161410	16	406.4	14	355.6	10	254.0	17.25	438.2	15.25	387.4	14	355.6	12	304.8	0.120"
PAMI161208	16	406.4	12	304.8	08	203.2	17.25	438.2	13.25	336.6	14	355.6	10	254.0	0.120"
PAMI161006	16	406.4	10	254.0	06	152.4	17.25	438.2	11.25	285.8	14	355.6	08	203.2	0.120"
PAMI141410	14	355.6	14	355.6	10	254.0	15.25	387.4	15.25	387.4	12	304.8	12	304.8	0.120"
PAMI141408	14	355.6	14	355.6	08	203.2	15.25	387.4	15.25	387.4	12	304.8	12	304.8	0.120"
PAMI141208	14	355.6	12	304.8	08	203.2	15.25	387.4	13.25	336.6	12	304.8	10	254.0	0.120"
PAMI141006	14	355.6	10	254.0	06	152.4	15.25	387.4	11.25	285.8	12	304.8	08	203.2	0.120"
PAMI140804	14	355.6	08	203.2	04	101.6	15.25	387.4	9.25	235.0	12	304.8	06	152.4	0.120"
PAMI121210	12	304.8	12	304.8	10	254.0	13.25	336.6	13.25	336.6	10	254.0	10	254.0	0.120"
PAMI121208	12	304.8	12	304.8	08	203.2	13.25	336.6	13.25	336.6	10	254.0	10	254.0	0.120"
PAMI121008	12	304.8	10	254.0	08	203.2	13.25	336.6	11.25	285.8	10	254.0	08	203.2	0.120"
PAMI120806	12	304.8	08	203.2	06	152.4	13.25	336.6	9.25	235.0	10	254.0	06	152.4	0.120"
PAMI120604	12	304.8	06	152.4	04	101.6	13.25	336.6	7.25	184.2	10	254.0	04	101.6	0.120"
PAMI101008	10	254.0	10	254.0	08	203.2	11.25	285.8	11.25	285.8	08	203.2	08	203.2	0.120"
PAMI101006	10	254.0	10	254.0	06	152.4	11.25	285.8	11.25	285.8	08	203.2	08	203.2	0.120"
PAMI100806	10	254.0	08	203.2	06	152.4	11.25	285.8	9.25	235.0	08	203.2	06	152.4	0.120"
PAMI100604	10	254.0	06	152.4	04	101.6	11.25	285.8	7.25	184.2	08	203.2	05	127.0	0.120"
PAMI080806	08	203.2	08	203.2	06	152.4	9.25	235.0	9.25	235.0	06	152.4	04	101.6	0.120"
PAMI080604	08	203.2	06	152.4	04	101.6	9.25	235.0	7.25	184.2	06	152.4	04	101.6	0.120"