



SPECIFICATIONS

- Prolonged Submersible up to 15 ft / 5 mtr (IEC 60529)
- Corrosion Resistant Salt Spray Test (ASTM B117)
- Rugged Design & Construction
- Seams continuously welded and ground smooth
- Single piece Neoprene Gasket
- Dual Gasket Beryllium Copper
- 360° Shielding EMC / RFI (MIL-STD-285)
- Interlock Corner Mounting locations
- Internal Weld Nut fastening locations for optional Back Plate accessory
- High Impact & Crush Resistance (IK10)
- Designed to withstand Shock & Vibration (MIL-STD-810)

MATERIAL

12 gauge | 3.00mm Stainless Steel Type 316*

FINISH

Non Reflective Bead Blast*

*Alternative finish & material options available on request

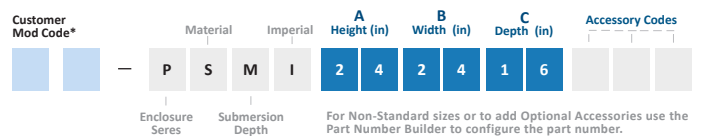
OPTIONAL ACCESSORIES

- Internal Mount/Back Plates
- Hinged Lid
- Optical Window Lid
- Padlock Tab
- Captive Lid Fasteners
- Internal Swing out Panel
- Welded in place Conduit Fittings
- Integrated Cable Entry Shielded Backshell
- Stainless Steel Type 316 Cable Glands / Cord grips
- Shock & Vibration Isolation Mount Kit

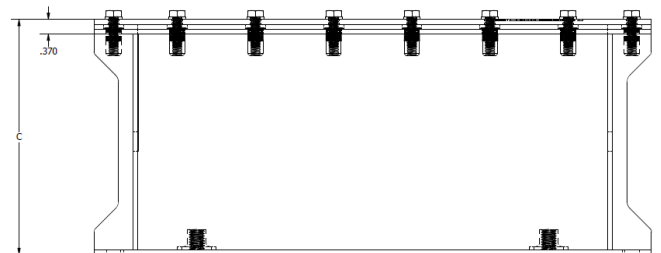
CODE

B
H
O
L
C
S

PART NUMBER BUILDER



*Generated by SLAYSON Engineering for customer specific modifications



INDUSTRY STANDARDS

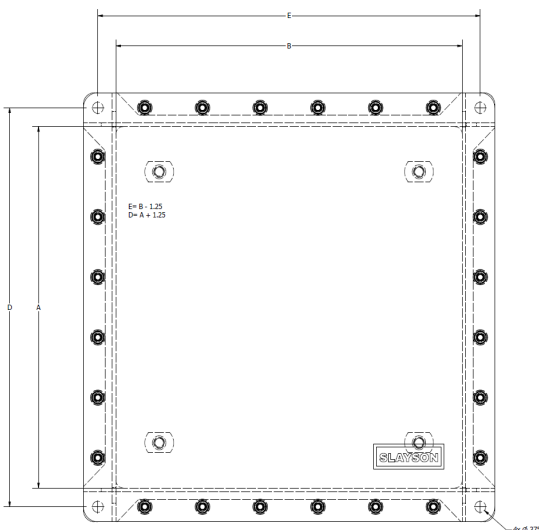
NEMA Type 6, 6P
IP67/68 IEC 60529
IK10 Impact Resistant
MIL-STD- 810, MIL-STD-285

APPLICATION

The NAV-XP-6P MARINE INTERLOCK BOX offers reliable protection for shipboard systems, Naval vessels and marine electronic hardware deployed in the harshest environments. Manufactured from Type 316 Stainless Steel this Enclosure series has hermetic sealing preventing any ingress of dust and water, with dual Beryllium Copper gasket to insure complete 360° EMC/RFI immunity. The NAV-XP-6P offers a COTS range of corrosion resistant enclosures and accessories, delivering a proven and flexible enclosure system to Naval specification.

MODIFICATION AND CUSTOMIZATION

SLAYSON excels at modifying and personalizing all our Enclosure products to meet your exact specifications. Whether you require connector cutouts, marker engraving or a non-standard size. Contact our experienced Engineers about your project specific solution.



PART NUMBER	A		B		C		D		E		INTERNAL MOUNT PLATE				Gauge
	Height		Width		Depth		Mount Height		Mount Width		Height		Width		
	in	mm	in	mm	in	mm	in	mm	in	mm	in	mm	in	mm	
PSMI242416	24	609.6	24	609.6	16	406.4	25.25	641.4	25.25	641.4	22	558.8	22	558.8	12
PSMI242412	24	609.6	24	609.6	12	304.8	25.25	641.4	25.25	641.4	22	558.8	22	558.8	12
PSMI242422	24	609.6	22	558.8	14	355.6	25.25	641.4	23.25	590.6	22	558.8	20	508.0	12
PAMI242012	24	609.6	20	508.0	12	304.8	25.25	641.4	21.25	539.8	22	558.8	18	457.2	12
PSMI242810	24	609.6	18	457.2	10	254.0	25.25	641.4	19.25	489.0	22	558.8	16	406.4	12
PSMI222216	22	558.8	22	558.8	16	406.4	23.25	590.6	23.25	590.6	20	508.0	20	508.0	12
PSMI222212	22	558.8	22	558.8	12	304.8	23.25	590.6	23.25	590.6	20	508.0	20	508.0	12
PSMI222014	22	558.8	20	508.0	14	355.6	23.25	590.6	21.25	539.8	20	508.0	18	457.2	12
PSMI221812	22	558.8	18	457.2	12	304.8	23.25	590.6	19.25	489.0	20	508.0	16	406.4	12
PSMI221610	22	558.8	16	406.4	10	254.0	23.25	590.6	17.25	438.2	20	508.0	14	355.6	12
PSMI202014	20	508.0	20	508.0	14	355.6	21.25	539.8	21.25	539.8	18	457.2	18	457.2	12
PSMI202010	20	508.0	20	508.0	10	254.0	21.25	539.8	21.25	539.8	18	457.2	18	457.2	12
PSMI201812	20	508.0	18	457.2	12	304.8	21.25	539.8	19.25	489.0	18	457.2	16	406.4	12
PSMI201610	20	508.0	16	406.4	10	254.0	21.25	539.8	17.25	438.2	18	457.2	14	355.6	12
PSMI201408	20	508.0	14	355.6	08	203.2	21.25	539.8	15.25	387.4	18	457.2	12	304.8	12
PSMI181814	18	457.2	18	457.2	14	355.6	19.25	489.0	19.25	489.0	16	406.4	16	406.4	12
PSMI181810	18	457.2	18	457.2	10	254.0	19.25	489.0	19.25	489.0	16	406.4	16	406.4	12
PSMI181612	18	457.2	16	406.4	12	304.8	19.25	489.0	17.25	438.2	16	406.4	14	355.6	12
PSMI181410	18	457.2	14	355.6	10	254.0	19.25	489.0	15.25	387.4	16	406.4	12	304.8	12
PSMI181208	18	457.2	12	304.8	08	203.2	19.25	489.0	13.25	336.6	16	406.4	10	254.0	12
PSMI161612	16	406.4	16	406.4	12	304.8	17.25	438.2	17.25	438.2	14	355.6	14	355.6	12
PSMI161610	16	406.4	16	406.4	10	254.0	17.25	438.2	17.25	438.2	14	355.6	14	355.6	12
PSMI161410	16	406.4	14	355.6	10	254.0	17.25	438.2	15.25	387.4	14	355.6	12	304.8	12
PSMI161208	16	406.4	12	304.8	08	203.2	17.25	438.2	13.25	336.6	14	355.6	10	254.0	12
PSMI161006	16	406.4	10	254.0	06	152.4	17.25	438.2	11.25	285.8	14	355.6	08	203.2	12
PSMI141410	14	355.6	14	355.6	10	254.0	15.25	387.4	15.25	387.4	12	304.8	12	304.8	12
PSMI141408	14	355.6	14	355.6	08	203.2	15.25	387.4	15.25	387.4	12	304.8	12	304.8	12
PSMI141208	14	355.6	12	304.8	08	203.2	15.25	387.4	13.25	336.6	12	304.8	10	254.0	12
PSMI141006	14	355.6	10	254.0	06	152.4	15.25	387.4	11.25	285.8	12	304.8	08	203.2	12
PAMI140804	14	355.6	08	203.2	04	101.6	15.25	387.4	9.25	235.0	12	304.8	06	152.4	12
PSMI121210	12	304.8	12	304.8	10	254.0	13.25	336.6	13.25	336.6	10	254.0	10	254.0	12
PSMI121208	12	304.8	12	304.8	08	203.2	13.25	336.6	13.25	336.6	10	254.0	10	254.0	12
PSMI121008	12	304.8	10	254.0	08	203.2	13.25	336.6	11.25	285.8	10	254.0	08	203.2	12
PSMI120806	12	304.8	08	203.2	06	152.4	13.25	336.6	9.25	235.0	10	254.0	06	152.4	12
PSMI120604	12	304.8	06	152.4	04	101.6	13.25	336.6	7.25	184.2	10	254.0	04	101.6	12
PSMI101008	10	254.0	10	254.0	08	203.2	11.25	285.8	11.25	285.8	08	203.2	08	203.2	12
PSMI101006	10	254.0	10	254.0	06	152.4	11.25	285.8	11.25	285.8	08	203.2	08	203.2	12
PSMI100806	10	254.0	08	203.2	06	152.4	11.25	285.8	9.25	235.0	08	203.2	06	152.4	12
PSMI100604	10	254.0	06	152.4	04	101.6	11.25	285.8	7.25	184.2	08	203.2	05	127.0	12
PSMI080806	08	203.2	08	203.2	06	152.4	9.25	235.0	9.25	235.0	06	152.4	04	101.6	12
PSMI080604	08	203.2	06	152.4	04	101.6	9.25	235.0	7.25	184.2	06	152.4	04	101.6	12