

**SPECIFICATIONS**

- Submersible up to 15 ft / 5 mtr (IEC 60529)
- Corrosion Resistant Salt Spray Test (ASTM B117)
- Manufactured from 14 gauge Stainless Steel Type 316
- Seams continuously welded and ground smooth
- Single piece Neoprene Gasket
- Internal Weld Nut fastening locations for optional Back Plate accessory
- High Impact & Crush Resistance (IK10)

**MATERIAL**

14 gauge | 2.00mm Stainless Steel Type 316\*

**FINISH**

Stainless Steel #4 Surface Finish\*

\*Alternative finish & material options available on request

**INDUSTRY STANDARDS**

NEMA Type 6, 6P  
IP67/68 IEC 60529  
IK10 Impact Resistant

**APPLICATION**

The SUBMERSIBLE JUNCTION BOX is the staple for power utility, infrastructure and renewal energy companies to protect vital cable connections and electrical hardware underground or above ground against ingress of water and dust. SLAYSON's SUBMERSIBLE JUNCTION BOX range of enclosures and accessories deliver a reliable enclosures system to meet all industry environmental challenges.

**MODIFICATION AND CUSTOMIZATION**

SLAYSON excels at modifying and personalizing all our Enclosure products to meet your exact specifications. Whether you require connector cutouts, marker engraving or a non-standard size. Contact our experienced Engineers about your project specific solution.

**OPTIONAL ACCESSORIES**

- Internal Mount/Back Plates
- Hinged Lid
- Optical Window Lid
- Padlock Tab
- Captive Lid Fasteners
- Internal Swing out Panel
- Welded in place Threaded Bosses
- Stainless Steel Type 316 Cable Glands / Cord grips
- Shock & Vibration Isolation Mount Kits
- Dual Gasket Beryllium Copper for 360° EMC / EMP Shielding
- External Grounding Stud
- Fluorosilicon (FVMQ) Gasket resistant to Fuels & Oils

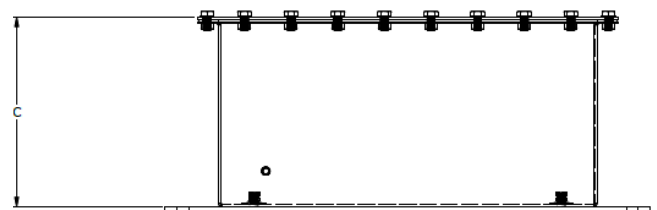
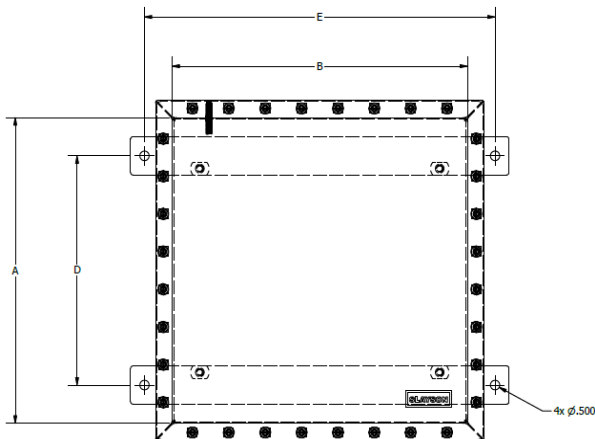
**CODE**

- B
- H
- O
- L
- C
- S

**PART NUMBER BUILDER**

Customer Mod Code*	Material	Imperial	A Height (in)	B Width (in)	C Depth (in)	Accessory Codes
	J S	M I	1 8	1 8	1 4	
	Enclosure Series	Submersion Depth	For Non-Standard sizes or to add Optional Accessories use the Part Number Builder to configure the part number.			

\*Generated by SLAYSON Engineering for customer specific modifications



PART NUMBER	A		B		C		D		E		INTERNAL MOUNT PLATE				Gauge
	Height		Width		Depth		Mount Height		Mount Width		Height		Width		
	in	mm	in	mm	in	mm	in	mm	in	mm	in	mm	in	mm	
JSMI181814	18	457.2	18	457.2	14	355.6	14	355.6	21	533.4	16	406.4	16	406.4	14
JSMI181812	18	457.2	18	457.2	12	304.8	14	355.6	21	533.4	16	406.4	16	406.4	14
JSMI181810	18	457.2	18	457.2	10	254.0	14	355.6	21	533.4	16	406.4	16	406.4	14
JSMI181808	18	457.2	18	457.2	08	203.2	14	355.6	21	533.4	16	406.4	16	406.4	14
JSMI181806	18	457.2	18	457.2	06	152.4	14	355.6	21	533.4	16	406.4	16	406.4	14
JSMI181412	18	457.2	14	355.6	12	304.8	14	355.6	17	431.8	16	406.4	12	304.8	14
JSMI181410	18	457.2	14	355.6	10	254.0	14	355.6	17	431.8	16	406.4	12	304.8	14
JSMI181408	18	457.2	14	355.6	08	203.2	14	355.6	17	431.8	16	406.4	12	304.8	14
JSMI181406	18	457.2	14	355.6	06	152.4	14	355.6	17	431.8	16	406.4	12	304.8	14
JSMI181210	18	457.2	12	304.8	10	254.0	14	355.6	15	381.0	16	406.4	10	254.0	14
JSMI181208	18	457.2	12	304.8	08	203.2	14	355.6	15	381.0	16	406.4	10	254.0	14
JSMI181206	18	457.2	12	304.8	06	152.4	14	355.6	15	381.0	16	406.4	10	254.0	14
JSMI161612	16	406.4	16	406.4	12	304.8	12	304.8	19	482.6	14	355.6	14	355.6	14
JSMI161610	16	406.4	16	406.4	10	254.0	12	304.8	19	482.6	14	355.6	14	355.6	14
JSMI161608	16	406.4	16	406.4	08	203.2	12	304.8	19	482.6	14	355.6	14	355.6	14
JSMI161606	16	406.4	16	406.4	06	152.4	12	304.8	19	482.6	14	355.6	14	355.6	14
JSMI161412	16	406.4	14	355.6	12	304.8	12	304.8	17	431.8	14	355.6	12	304.8	14
JSMI161410	16	406.4	14	355.6	10	254.0	12	304.8	17	431.8	14	355.6	12	304.8	14
JSMI161408	16	406.4	14	355.6	08	203.2	12	304.8	17	431.8	14	355.6	12	304.8	14
JSMI161406	16	406.4	14	355.6	06	152.4	12	304.8	17	431.8	14	355.6	12	304.8	14
JSMI161210	16	406.4	12	304.8	10	254.0	12	304.8	15	381.0	14	355.6	10	254.0	14
JSMI161208	16	406.4	12	304.8	08	203.2	12	304.8	15	381.0	14	355.6	10	254.0	14
JSMI161206	16	406.4	12	304.8	06	152.4	12	304.8	15	381.0	14	355.6	10	254.0	14
JSMI141412	14	355.6	14	355.6	12	304.8	10	254.0	17	431.8	12	304.8	12	304.8	14
JSMI141410	14	355.6	14	355.6	10	254.0	10	254.0	17	431.8	12	304.8	12	304.8	14
JSMI141408	14	355.6	14	355.6	08	203.2	10	254.0	17	431.8	12	304.8	12	304.8	14
JSMI141406	14	355.6	14	355.6	06	152.4	10	254.0	17	431.8	12	304.8	12	304.8	14
JSMI141210	14	355.6	12	304.8	10	254.0	10	254.0	15	381.0	12	304.8	10	254.0	14
JSMI141208	14	355.6	12	304.8	08	203.2	10	254.0	15	381.0	12	304.8	10	254.0	14
JSMI141206	14	355.6	12	304.8	06	152.4	10	254.0	15	381.0	12	304.8	10	254.0	14
JSMI121210	12	304.8	12	304.8	10	254.0	8	203.2	15	381.0	10	254.0	10	254.0	14
JSMI121208	12	304.8	12	304.8	08	203.2	8	203.2	15	381.0	10	254.0	10	254.0	14
JSMI121206	12	304.8	12	304.8	06	152.4	8	203.2	15	381.0	10	254.0	10	254.0	14
JSMI121008	12	304.8	10	254.0	08	203.2	8	203.2	13	330.2	10	254.0	8	203.2	14
JSMI121006	12	304.8	10	254.0	06	152.4	8	203.2	13	330.2	10	254.0	8	203.2	14
JSMI101008	10	254.0	10	254.0	08	203.2	6	152.4	13	330.2	08	203.2	8	203.2	14
JSMI101006	10	254.0	10	254.0	06	152.4	6	152.4	13	330.2	08	203.2	8	203.2	14
JSMI101004	10	254.0	10	254.0	04	101.6	6	152.4	13	330.2	08	203.2	8	203.2	14
JSMI100806	10	254.0	8	203.2	06	152.4	6	152.4	11	279.4	08	203.2	6	152.4	14
JSMI100804	10	254.0	8	203.2	04	101.6	6	152.4	11	279.4	08	203.2	6	152.4	14